

6

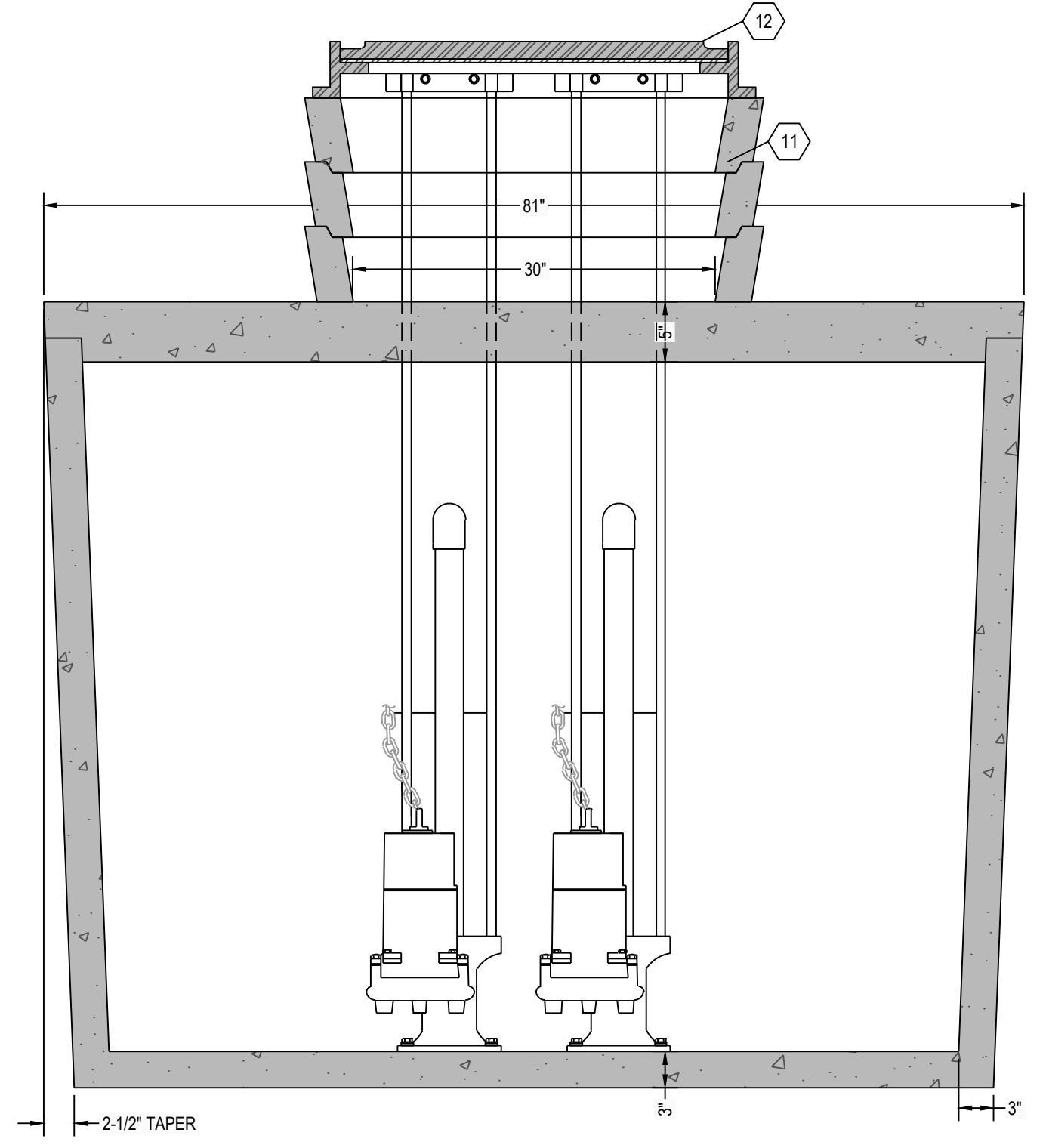
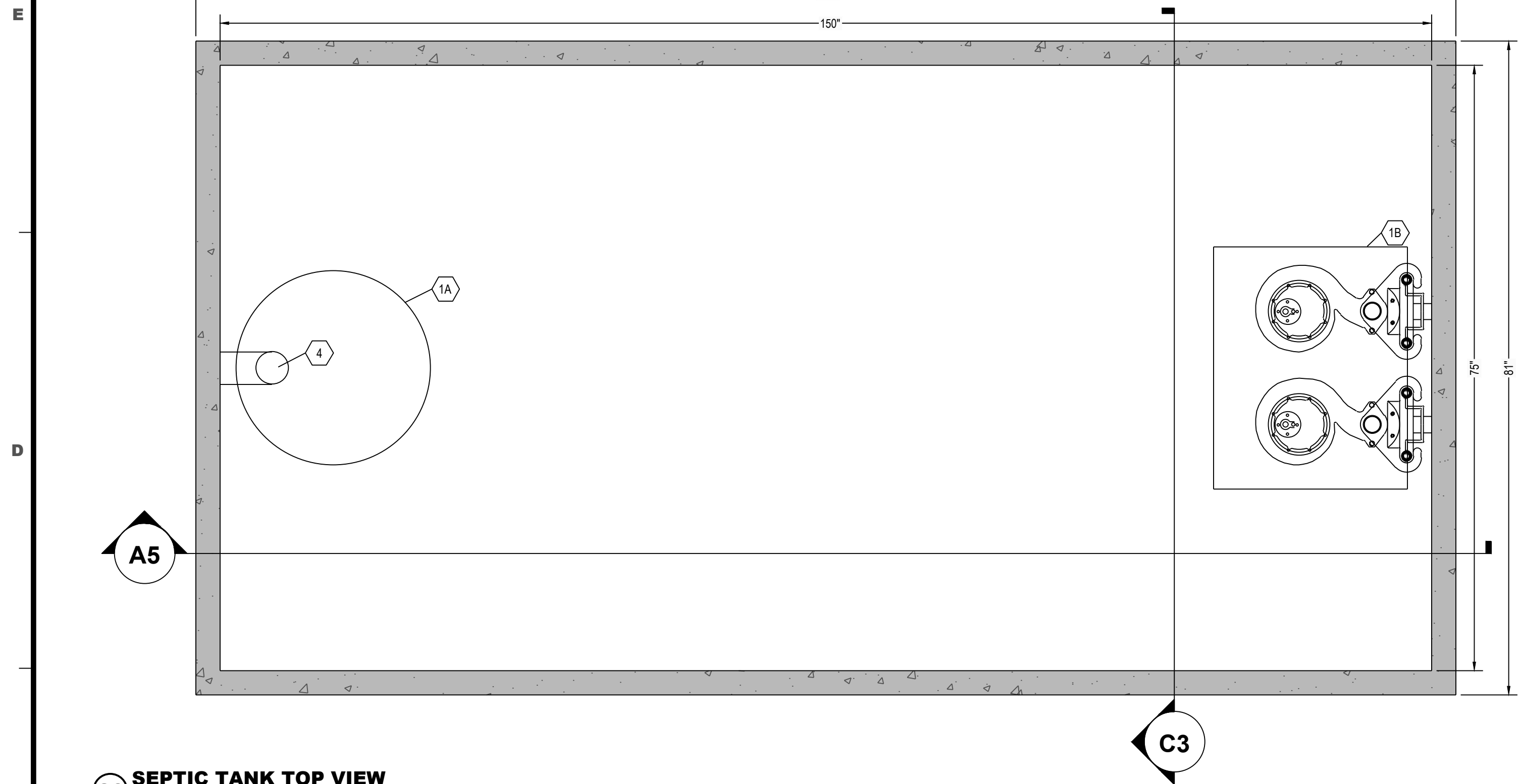
5

4

3

2

1



- DESIGN DATA:**
- EARTH COVER = 3 FEET MAX
  - ALLOWABLE WHEEL LOAD = 2500 LB MAX
  - CONCRETE MINIMUM COMPRESSIVE STRENGTH = 5,090 PSI @ 28 DAYS
  - LIFTING HOOKS ARE 1/2" DIAMETER, ASTM A36 COLD ROLLED STEEL
  - SEPTIC TANK LID IS REINFORCED WITH 6 X 6 W8.0 X W8.0 WELDED WIRE FABRIC
  - SEPTIC TANK BOTTOM AND SIDES ARE REINFORCED WITH 6 X 6 W10.0 X W10.0 WELDED WIRE FABRIC
  - ALL CONCRETE SURFACES ARE COATED WITH AIRLESS ASPHALT

**CASTING WEIGHTS**

WEIGHT OF LID: 5,484.4 LBS  
 WEIGHT OF TANK: 9,697.9 LBS  
 TOTAL CASTING WEIGHT: 15,182.3 LBS

**DOSING TANK CAPACITY:**

45.7 GALLONS PER INCH  
 MAXIMUM DOSE = XXX GALLONS (XX)  
 PUMP COOLING = 594 GALLONS (13")  
 UNUSED (LAG AND ALARM) = 166 GALLONS (6")  
 TOTAL = XXX GALLONS (XX)

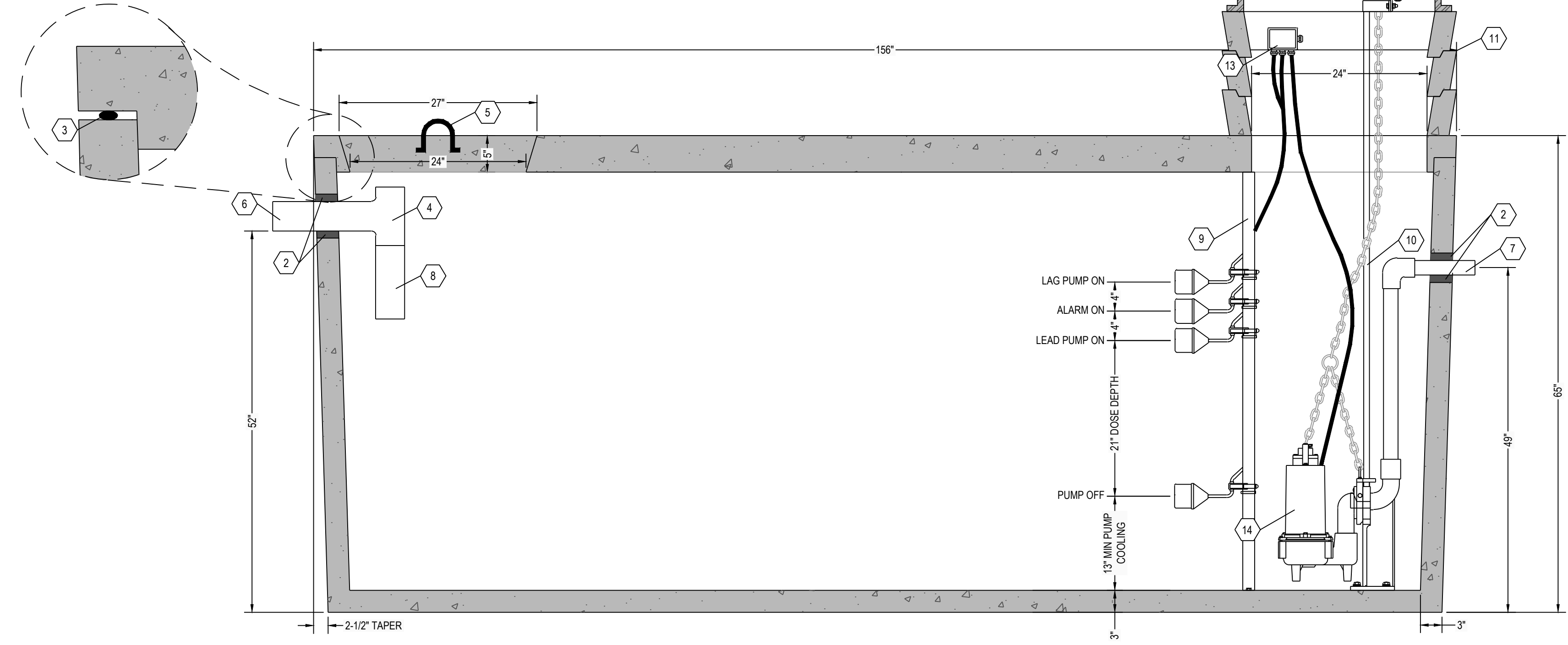
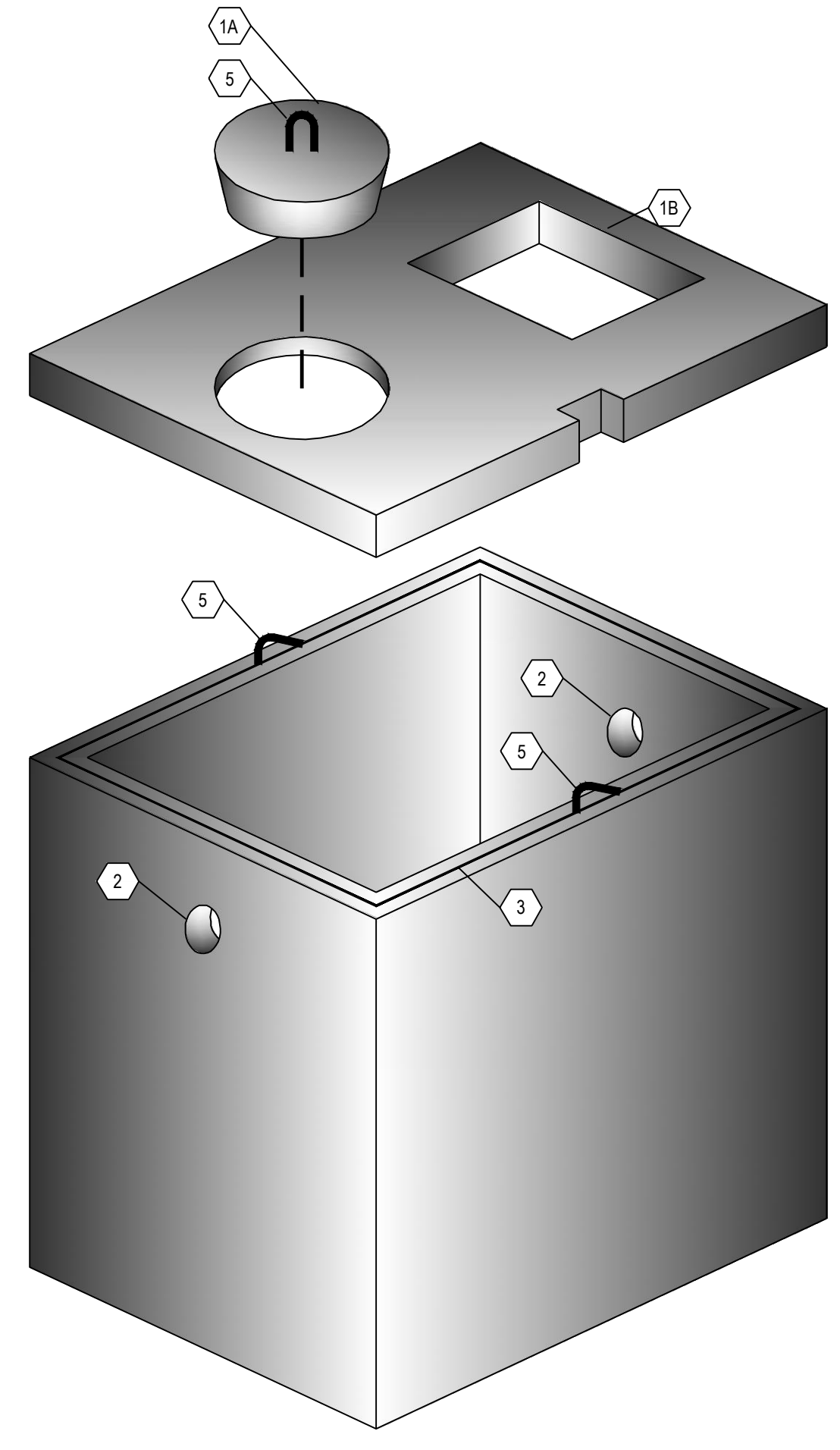
- NOTES:**
- SET PUMP ON FLOAT SWITCH ELEVATION ACCORDING TO ELEVATION TABLE (BELOW); WHICH YIELDS THE REQUIRED DOSE VOLUME OF XXX GALLONS.
  - CONTRACTOR SHALL INSTALL CONTROL PANEL ACCORDING TO PUMP MANUFACTURER'S RECOMMENDATION.
  - COORDINATE POWER & ALARM SERVICE PRIOR TO CONSTRUCTION ACTIVITIES
  - ONLY NON-CORROSIVE MATERIALS SHALL BE UTILIZED WITHIN THE DOSING TANK AND FOR THE RISER AND LID (NO GALVANIZED, PAINTED, OR EXPOSED STEEL)
  - AUDIO VISUAL ALARM CIRCUIT MUST LOCK ON WITH ANY PUMP FAILURE WITH MANUAL RESET.

**C6 SEPTIC TANK TOP VIEW**  
1" = 1"

**C3 SEPTIC TANK SECTION VIEW**  
1" = 1"

**DOSING CHAMBER ELEVATIONS**

DESCRIPTION	ELEVATION (FEET)
BOTTOM OF CHAMBER	0.00
PUMP OFF	1.08
PUMP ON	2.83
ALARM	3.17
LAG PUMP ON	3.50



- NOTE:**
- 24" DIAMETER POLY RISERS & LIDS OR 24" DIAMETER CONCRETE GRADE RINGS OR LARGER CUSTOM RECTANGULAR RISERS WITH ALUMINUM HATCHES ARE AVAILABLE AS SUBSTITUTES TO CONCRETE GRADE RINGS AS SHOWN HEREON.
  - HIGH PRESSURE CLOSED END BOOT SEALS ARE AVAILABLE AS SUBSTITUTES TO RUBBER GASKET TYPE SEALS AS SHOWN HEREON.

**KEYNOTE INDEX**

1A	24" DIAMETER MANWAY
1B	24" X 30" MANHOLE OPENING
2	HIGH PRESSURE CLOSED END BOOT SEAL
3	MASTIC ROPE
4	SANITARY TEE AT INLET
5	1/2" DIAMETER LIFTING HOOKS
6	4" DIAMETER INLET (6" AVAILABLE UPON REQUEST)
7	X" DIAMETER OUTLET
8	12" EXTENSION AT INLET
9	FLOAT POLE ASSEMBLY WITH STAINLESS STEEL HARDWARE
10	RAIL SYSTEM WITH STAINLESS STEEL RAILS & HARDWARE
11	CONCRETE GRADE RING (AS NECESSARY)
12	LOCKABLE ALUMINUM HATCH & FRAME
13	WATERTIGHT ELECTRICAL JUNCTION BOX
14	DOSING PUMP

**A6 THREE DIMENSIONAL ISOMETRIC VIEW**  
NTS

**A5 SEPTIC TANK SECTION VIEW**  
1" = 1"

**\* ALL RENSSELAER SEPTIC TANKS ARE MONOLITHICALLY Poured \***

# RENSSELAER SEPTIC TANKS

1211 NORTH WESTON STREET  
 P.O. BOX 70  
 RENSSELAER, INDIANA 47978  
 phone: (219) 866-5063  
 (800) 240-5123  
 fax: (219) 866-3894

PROJECT NAME  
 CLIENT NAME  
 ADDRESS

PROJECT NO: \_\_\_\_\_  
 FILE: 2000 GAL- SINGLE- NT- DUPLEX.DWG  
 DRAWN BY: ASJM  
 CHECKED BY: PEW  
 TITLE:  
**MANUFACTURER'S  
 DETAIL DRAWING**  
 2000 GALLON DUPLEX CHAMBER  
 NO TRAFFIC

**R-000**

This drawing is the property of Rensselaer Septic Tanks. It is submitted for reference purposes only. © 2008 Rensselaer Septic Tanks