

6

5

4

3

2

1

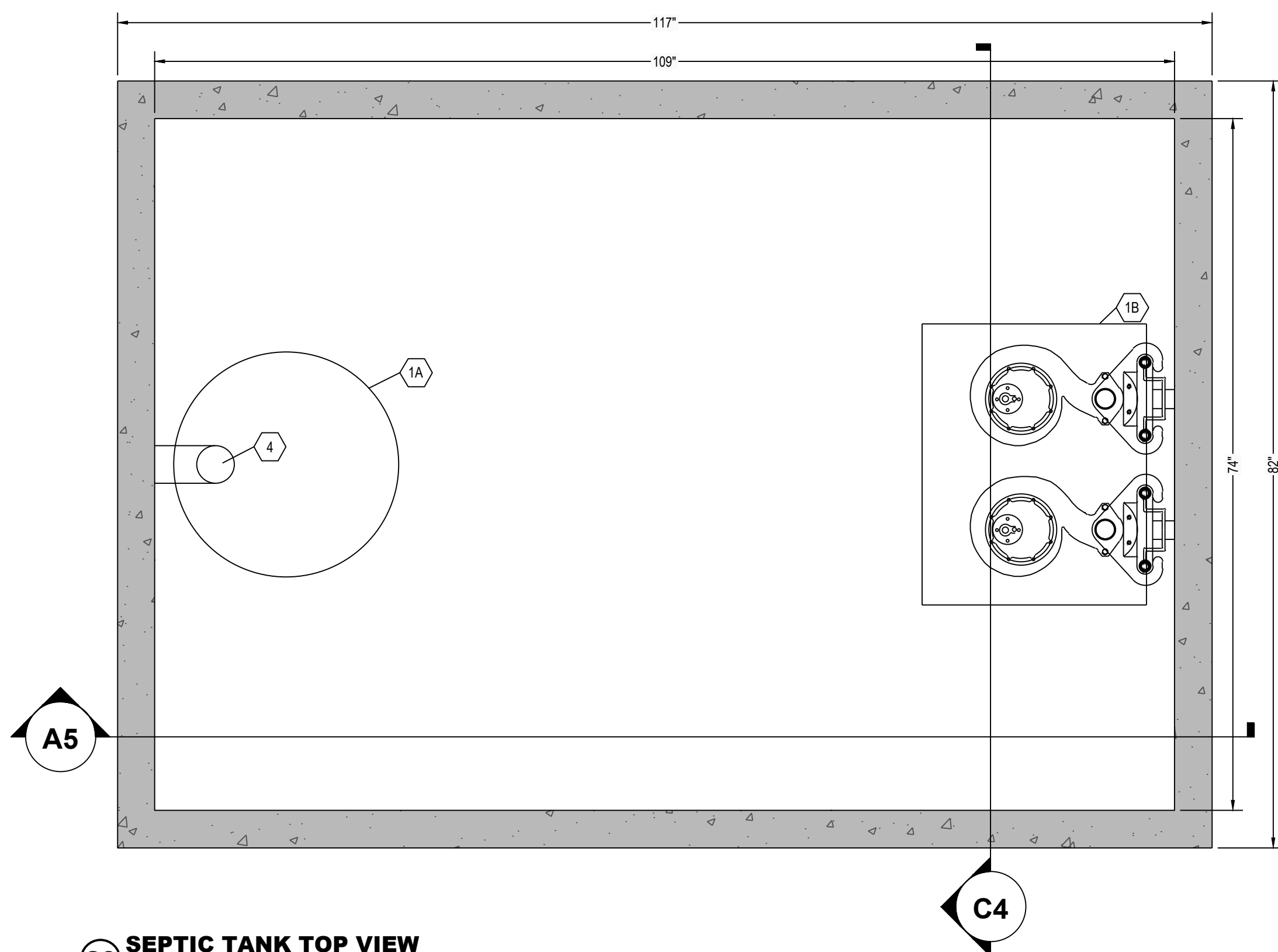
E

D

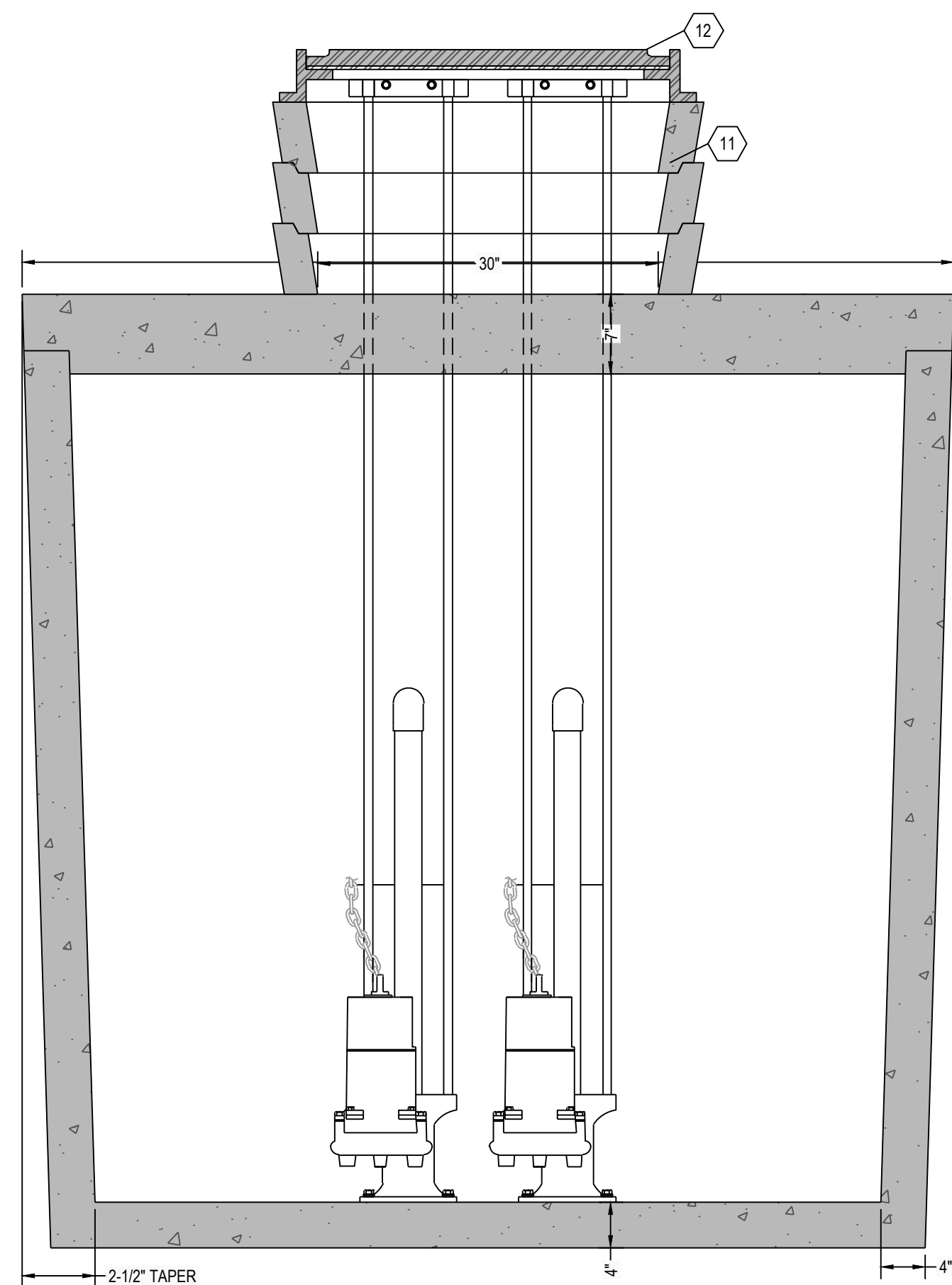
C

B

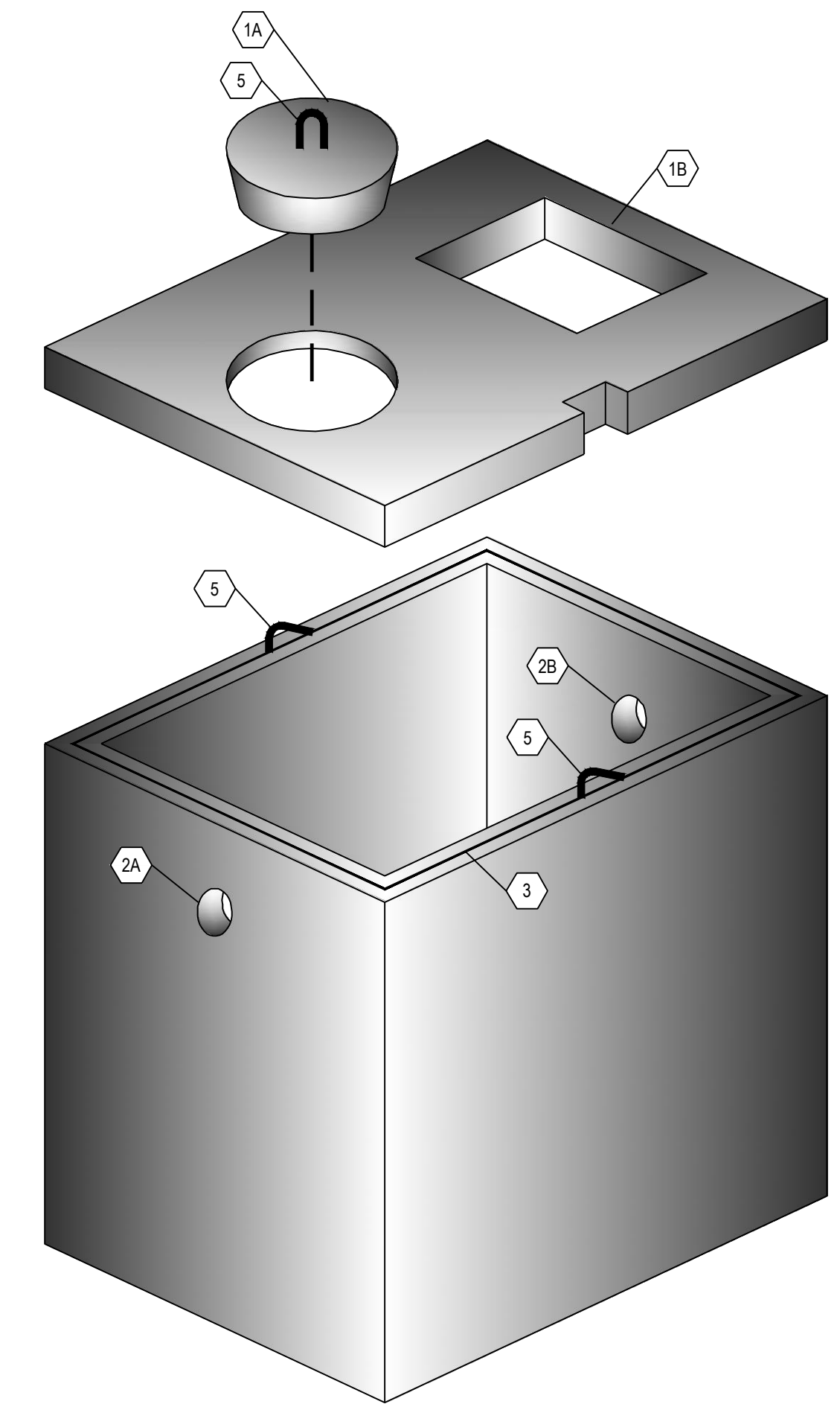
A



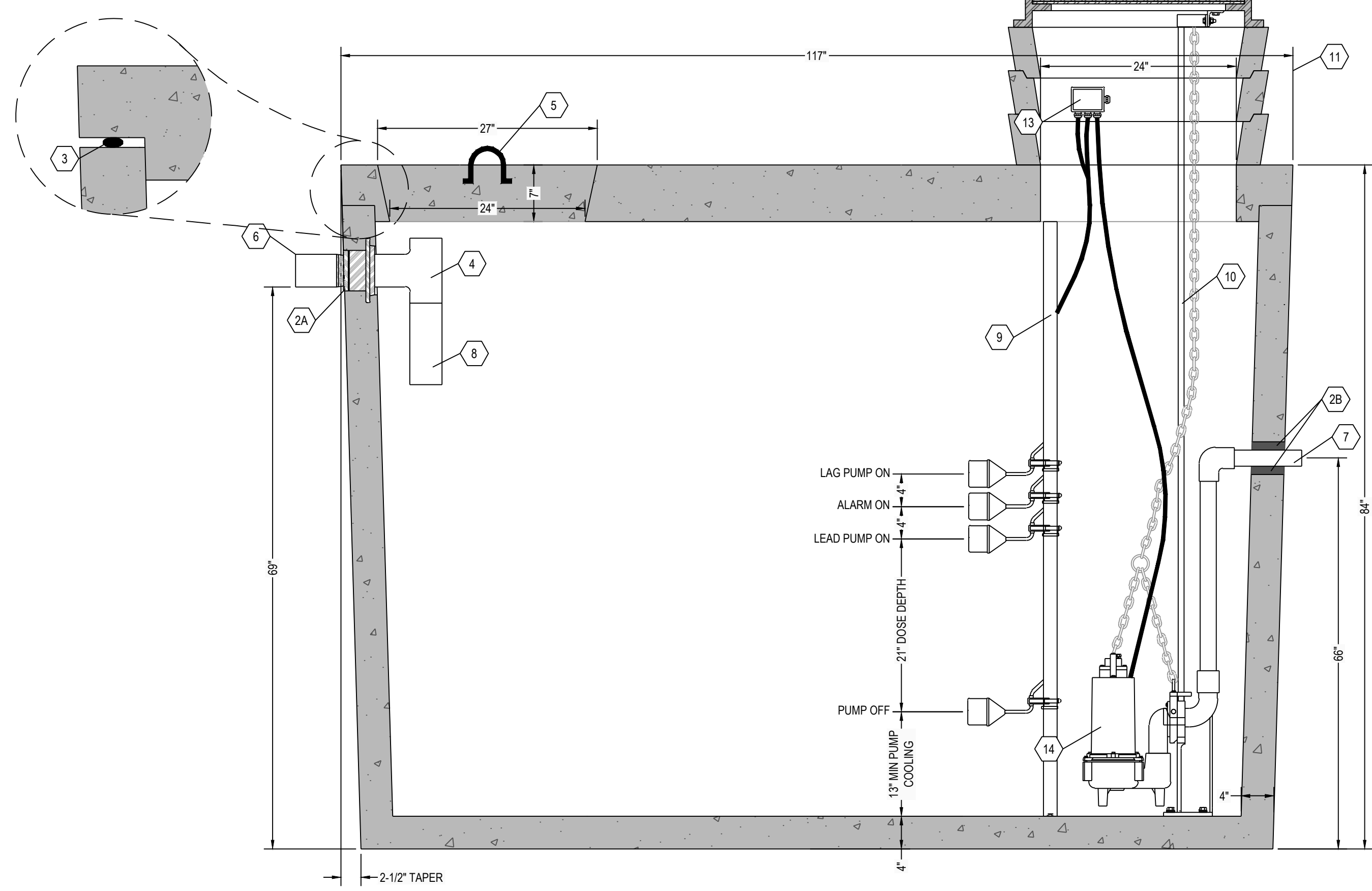
C6 SEPTIC TANK TOP VIEW
1" = 1"



C4 SEPTIC TANK SECTION VIEW
1" = 1"



A6 THREE DIMENSIONAL ISOMETRIC VIEW
NTS



A5 SEPTIC TANK SECTION VIEW
1" = 1"

DESIGN DATA:

1. EARTH COVER = 5 FEET MAX
2. ALLOWABLE WHEEL LOAD = 8000 LB MAX
3. CONCRETE MINIMUM COMPRESSIVE STRENGTH = 5,000 PSI @ 28 DAYS
4. LIFTING HOOKS ARE 5" DIAMETER, ASTM A36 COLD ROLLED STEEL
5. SEPTIC TANK LID IS REINFORCED WITH #3 REBAR SPACED AT 12" OC GRID.
6. SEPTIC TANK BOTTOM AND SIDES ARE REINFORCED WITH 6 X 6 W8.0 X W8.0 WELDED WIRE FABRIC.
7. ALL CONCRETE SURFACES ABOVE THE LIQUID LEVEL ARE COATED WITH AIRLESS ASPHALT.

CASTING WEIGHTS

WEIGHT OF LID: 5,697 LBS
 WEIGHT OF TANK: 12,494 LBS
 TOTAL CASTING WEIGHT: 18,191 LBS

DOSING TANK CAPACITY:

LIQUID STORAGE = 2036 GALLONS
 TOTAL VOLUME = 2584 GALLONS

32.8 GALLONS PER INCH
 MAXIMUM DOSE = XXX GALLONS (XX")
 PUMP COOLING = 426 GALLONS (13")
 UNUSED (LAG AND ALARM) = 282 GALLONS (8")
 TOTAL = XXX GALLONS (XX")

NOTES:

1. SET PUMP ON FLOAT SWITCH ELEVATION ACCORDING TO ELEVATION TABLE (BELOW); WHICH YIELDS THE REQUIRED DOSE VOLUME OF XXX GALLONS.
2. CONTRACTOR SHALL INSTALL CONTROL PANEL ACCORDING TO PUMP MANUFACTURER'S RECOMMENDATION.
3. COORDINATE POWER & ALARM SERVICE PRIOR TO CONSTRUCTION ACTIVITIES.
4. ONLY NON-CORROSIVE MATERIALS SHALL BE UTILIZED WITHIN THE DOSING TANK AND FOR THE RISER AND LID (NO GALVANIZED, PAINTED, OR EXPOSED STEEL).
5. AUDIO VISUAL ALARM CIRCUIT MUST LOCK ON WITH ANY PUMP FAILURE WITH MANUAL RESET.

NOTE:
 24" DIAMETER POLY RISERS & LIDS OR 24" DIAMETER CONCRETE GRADE RINGS OR LARGER CUSTOM RECTANGULAR RISERS WITH ALUMINUM HATCHES ARE AVAILABLE AS SUBSTITUTES TO CONCRETE GRADE RINGS AS SHOWN HEREON.

DOSING CHAMBER ELEVATIONS

DESCRIPTION	ELEVATION (FEET)
BOTTOM OF CHAMBER	0.00
PUMP OFF	1.08
PUMP ON	2.83
ALARM	3.17
LAG PUMP	3.50

KEYNOTE INDEX

1A	24" DIAMETER MANWAY
1B	24" X 30" MANHOLE OPENING
2A	HIGH PRESSURE CLOSED END BOOT SEAL
2B	TS-4PRO RUBBER GASKET SEAL BY TUF-TITE
3	MASTIC ROPE
4	SANITARY TEE AT INLET
5	5" DIAMETER LIFTING HOOKS
6	6" DIAMETER INLET
7	1" DIAMETER OUTLET
8	12" EXTENSION AT INLET
9	FLOAT POLE ASSEMBLY WITH STAINLESS STEEL HARDWARE
10	RAIL SYSTEM WITH STAINLESS STEEL RAILS & HARDWARE
11	CONCRETE GRADE RING (AS NECESSARY)
12	LOCKABLE ALUMINUM HATCH & FRAME
13	WATERTIGHT ELECTRICAL JUNCTION BOX
14	DOSING PUMP

*** ALL RENSSELAER SEPTIC TANKS ARE MONOLITHICALLY Poured ***

RENSSELAER SEPTIC TANKS

1211 NORTH WESTON STREET
 P.O. BOX 70
 RENSSELAER, INDIANA 47978
 phone: (219) 866-5063
 (800) 240-5123
 fax: (219) 866-3894

PROJECT NAME
 CLIENT NAME
 ADDRESS

PROJECT NO:
 FILE: 2000 GAL- SINGLE TR- DUPLEX.DWG
 DRAWN BY: ASJM
 CHECKED BY: PEW

TITLE:
**MANUFACTURER'S
 DETAIL DRAWING**
 2000 GALLON DUPLEX CHAMBER
 TRAFFIC RATED

R-000

This drawing is the property of Rensselaer Septic Tanks. It is submitted for reference purposes only. © 2008 Rensselaer Septic Tanks