

6

5

4

3

2

1

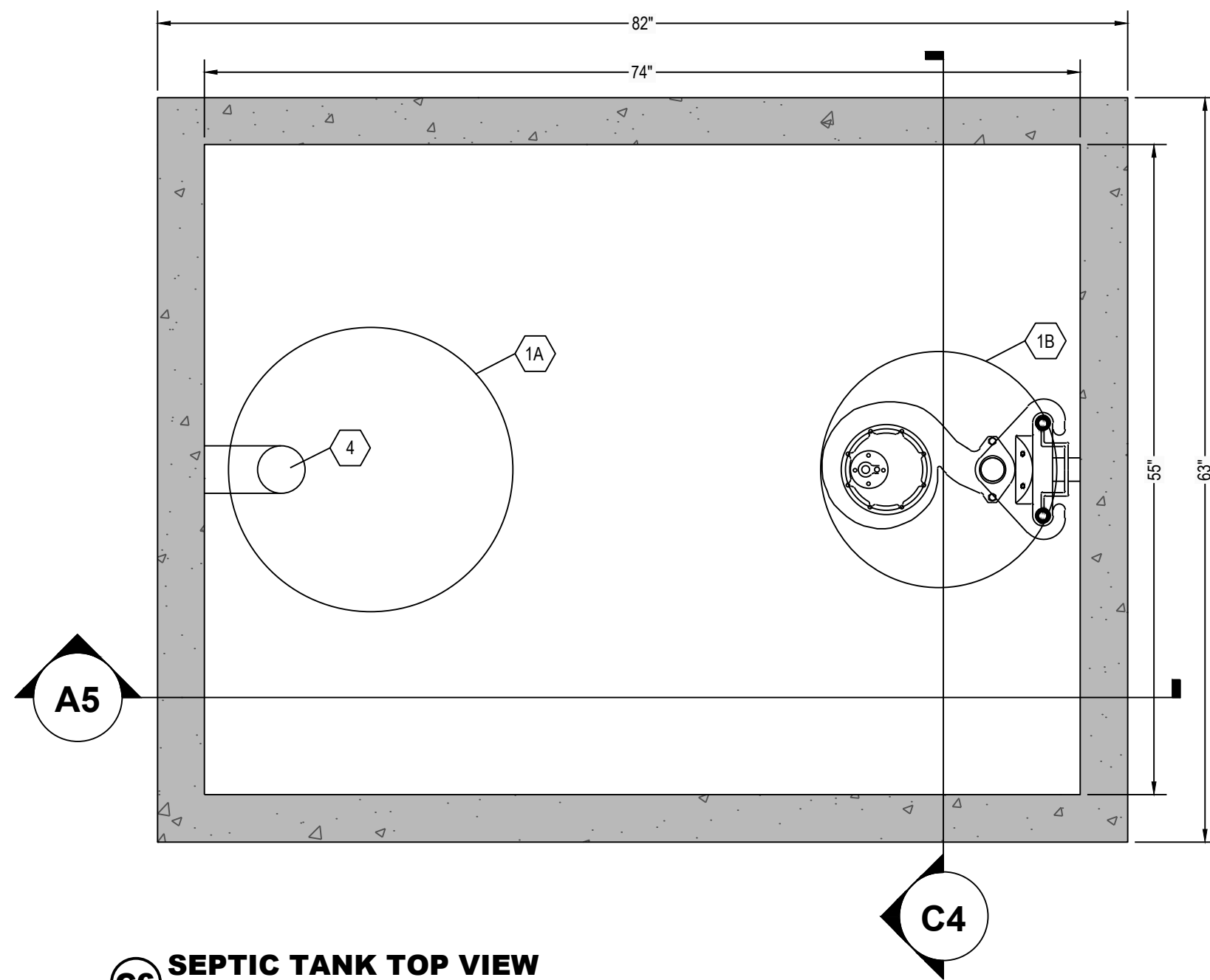
E

D

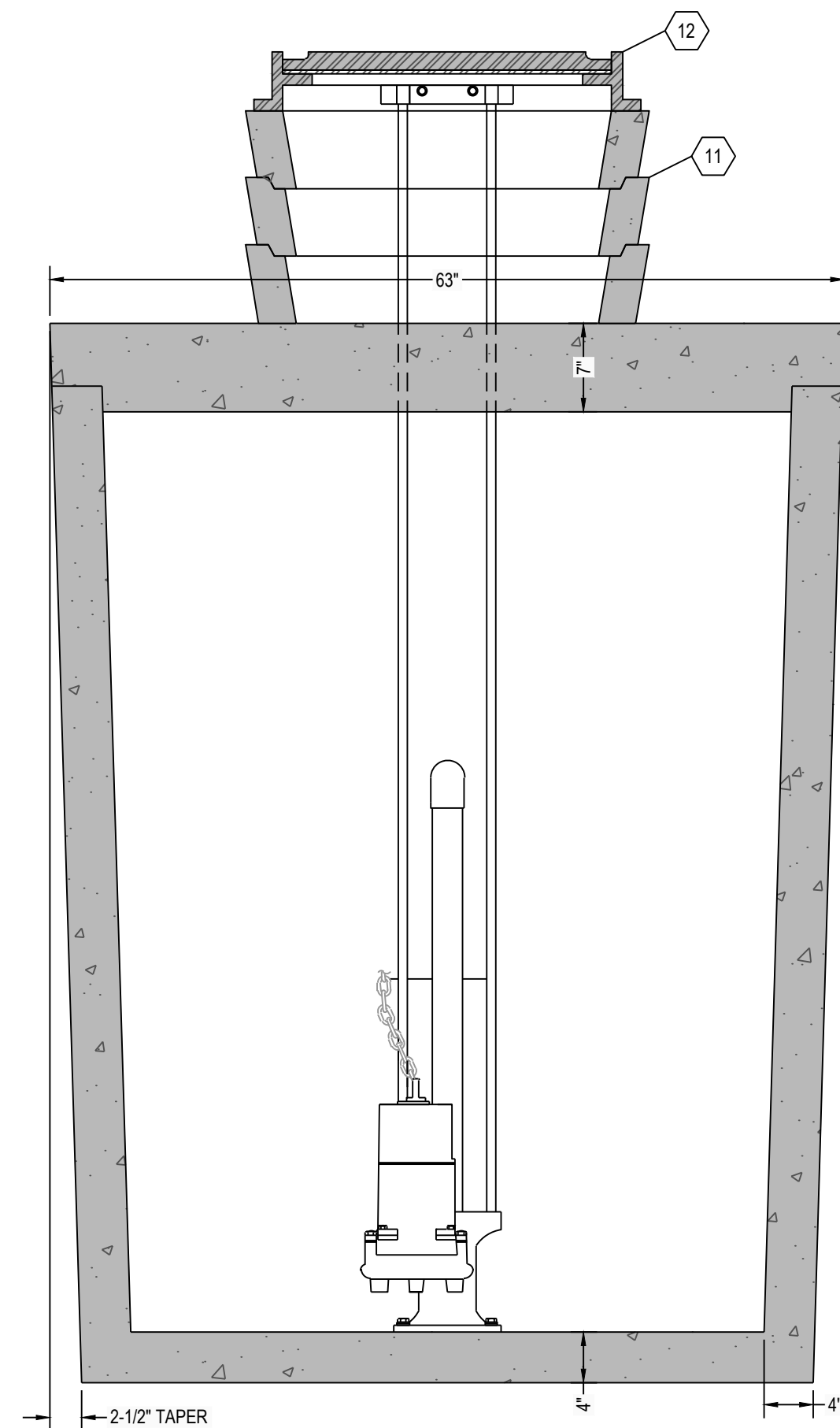
C

B

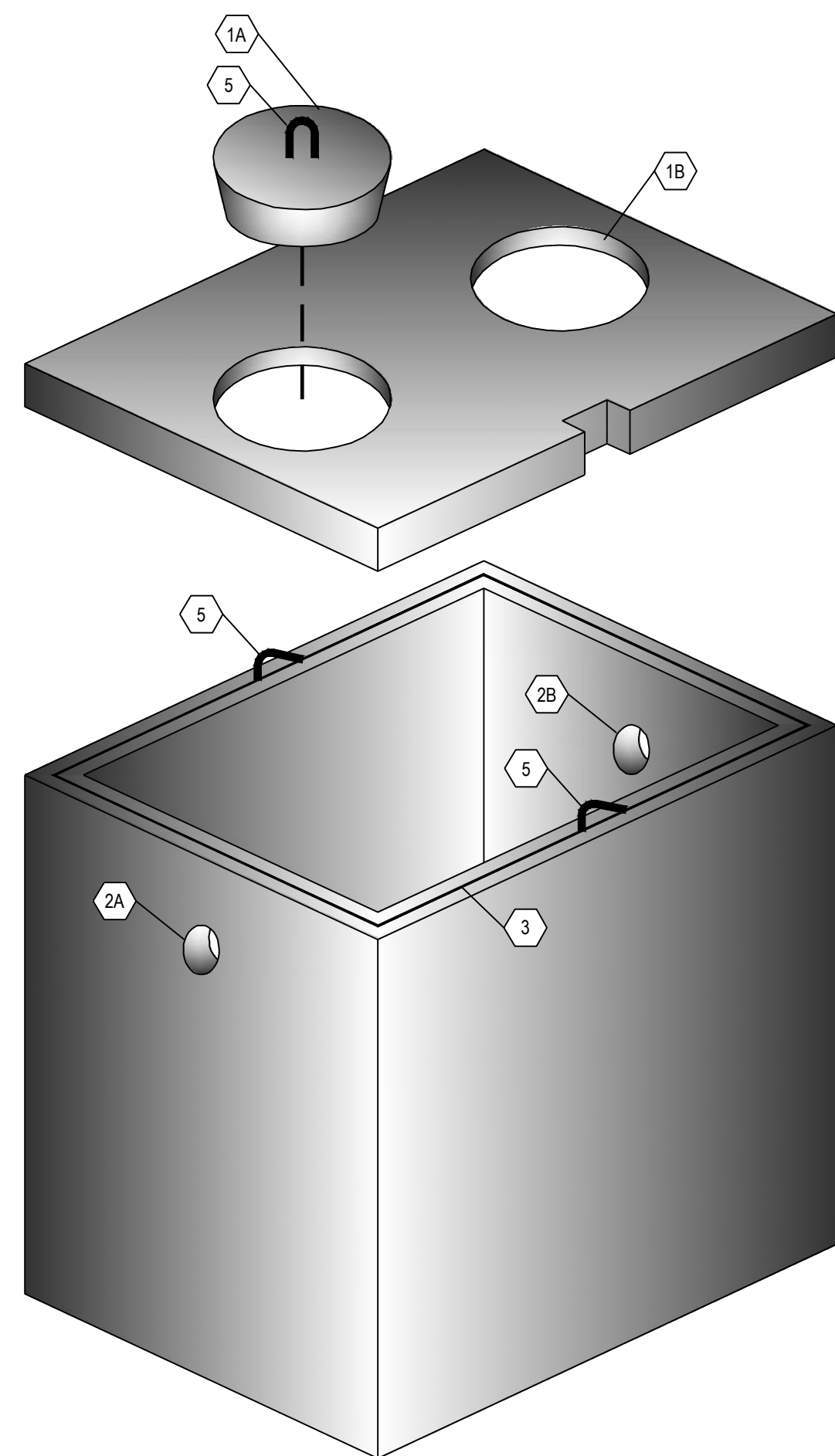
A



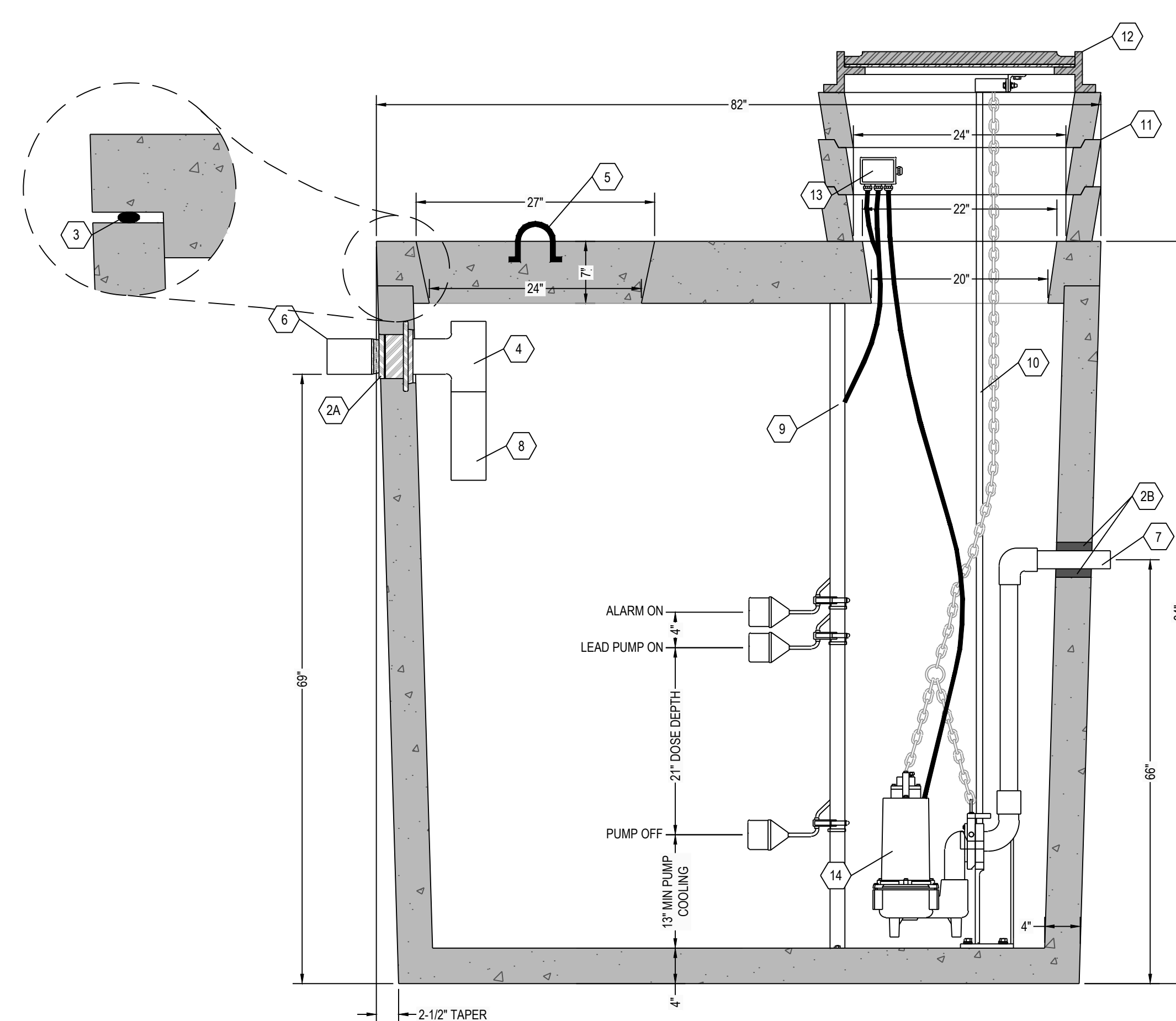
**C6 SEPTIC TANK TOP VIEW**  
1" = 1"



**C4 SEPTIC TANK TOP VIEW**  
1" = 1"



**A6 THREE DIMENSIONAL ISOMETRIC VIEW**  
NTS



**A5 SEPTIC TANK SECTION VIEW**  
1" = 1"

**NOTE:**  
24" DIAMETER POLY RISERS & LIDS OR CUSTOM RECTANGULAR RISERS WITH ALUMINUM HATCHES ARE AVAILABLE AS SUBSTITUTES TO CONCRETE GRADE RINGS AS SHOWN HEREON.

**DOSING CHAMBER ELEVATIONS**

| DESCRIPTION       | ELEVATION (FEET) |
|-------------------|------------------|
| BOTTOM OF CHAMBER | 0.00             |
| PUMP OFF          | 1.08             |
| PUMP ON           | 2.83             |
| ALARM             | 3.17             |
| LAG PUMP ON       | N/A              |

**KEYNOTE INDEX**

|    |   |
|----|---|
| 1A | 24" DIAMETER MANWAY                               |
| 1B | 20" DIAMETER MANHOLE OPENING                      |
| 2A | HIGH PRESSURE CLOSED END BOOT SEAL                |
| 2B | TS-4PRO RUBBER GASKET SEAL BY TUF-TITE            |
| 3  | MASTIC ROPE                                       |
| 4  | SANITARY TEE AT INLET                             |
| 5  | 3" DIAMETER LIFTING HOOKS                         |
| 6  | 6" DIAMETER INLET                                 |
| 7  | 12" DIAMETER OUTLET                               |
| 8  | 12" EXTENSION AT INLET                            |
| 9  | FLOAT POLE ASSEMBLY WITH STAINLESS STEEL HARDWARE |
| 10 | RAIL SYSTEM WITH STAINLESS STEEL RAILS & HARDWARE |
| 11 | CONCRETE GRADE RING (AS NECESSARY)                |
| 12 | CAST FRAME & COVER (NOT INCLUDED)                 |
| 13 | WATERTIGHT ELECTRICAL JUNCTION BOX                |
| 14 | DOSING PUMP                                       |

**DESIGN DATA:**

- EARTH COVER = 5 FEET MAX
- ALLOWABLE WHEEL LOAD = 8000 LB MAX
- CONCRETE MINIMUM COMPRESSIVE STRENGTH = 5,000 PSI @ 28 DAYS
- LIFTING HOOKS ARE 3/4" DIAMETER, ASTM A36 COLD ROLLED STEEL
- SEPTIC TANK LID IS REINFORCED WITH #3 REBAR SPACED AT 12" OC GRID
- SEPTIC TANK BOTTOM AND SIDES ARE REINFORCED WITH 6 X 6 W8.0 X W8.0 WELDED WIRE FABRIC.
- ALL CONCRETE SURFACES ABOVE THE LIQUID LEVEL ARE COATED WITH AIRLESS ASPHALT.

**CASTING WEIGHTS**

WEIGHT OF LID: 3,043.9 LBS  
 WEIGHT OF TANK: 8,493.5 LBS  
 TOTAL CASTING WEIGHT: 11,537.4 LBS

**DOSING TANK CAPACITY:**

LIQUID STORAGE = 1006 GALLONS  
 TOTAL VOLUME = 1198 GALLONS

16.2 GALLONS PER INCH  
 MAXIMUM DOSE = XXX GALLONS (XX)  
 PUMP COOLING = 211 GALLONS (13")  
 UNUSED (ALARM) = 65 GALLONS (4")  
 TOTAL = XXX GALLONS (XX)

**NOTES:**

- SET PUMP ON FLOAT SWITCH ELEVATION ACCORDING TO ELEVATION TABLE (BELOW), WHICH YIELDS THE REQUIRED DOSE VOLUME OF XXX GALLONS.
- CONTRACTOR SHALL INSTALL CONTROL PANEL ACCORDING TO PUMP MANUFACTURER'S RECOMMENDATION.
- COORDINATE POWER & ALARM SERVICE PRIOR TO CONSTRUCTION ACTIVITIES.
- ONLY NON-CORROSIVE MATERIALS SHALL BE UTILIZED WITHIN THE DOSING TANK AND FOR THE RISER AND LID (NO GALVANIZED, PAINTED, OR EXPOSED STEEL).
- AUDIO VISUAL ALARM CIRCUIT MUST LOCK ON WITH ANY PUMP FAILURE WITH MANUAL RESET.

# RENSELAER SEPTIC TANKS

1211 NORTH WESTON STREET  
 P.O. BOX 70  
 RENSELAER, INDIANA 47978  
 phone: (219) 866-5063  
 (800) 240-5123  
 fax: (219) 866-3894

PROJECT NAME  
 CLIENT NAME  
 ADDRESS

PROJECT NO: \_\_\_\_\_  
 FILE: 1000 GAL-SINGLE-TR-SIMPLEX.DWG  
 DRAWN BY: ASJM  
 CHECKED BY: PEW

TITLE:  
**MANUFACTURER'S  
 DETAIL DRAWING**  
 1000 GALLON SIMPLEX CHAMBER  
 TRAFFIC RATED

**R-000**

\* ALL RENSELAER SEPTIC TANKS ARE MONOLITHICALLY Poured \*

6

5

4

3

2

1