

6

5

4

3

2

1

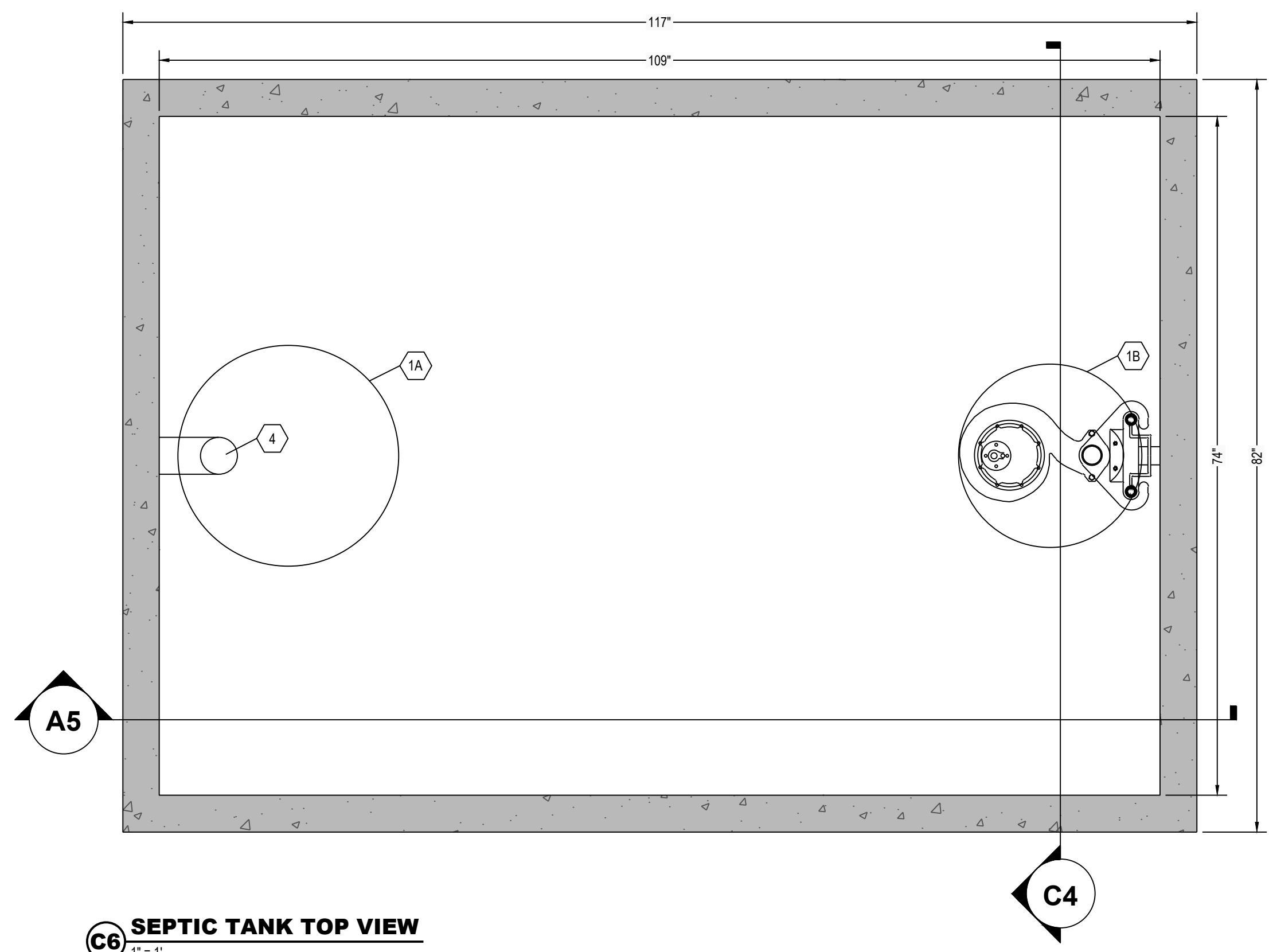
E

D

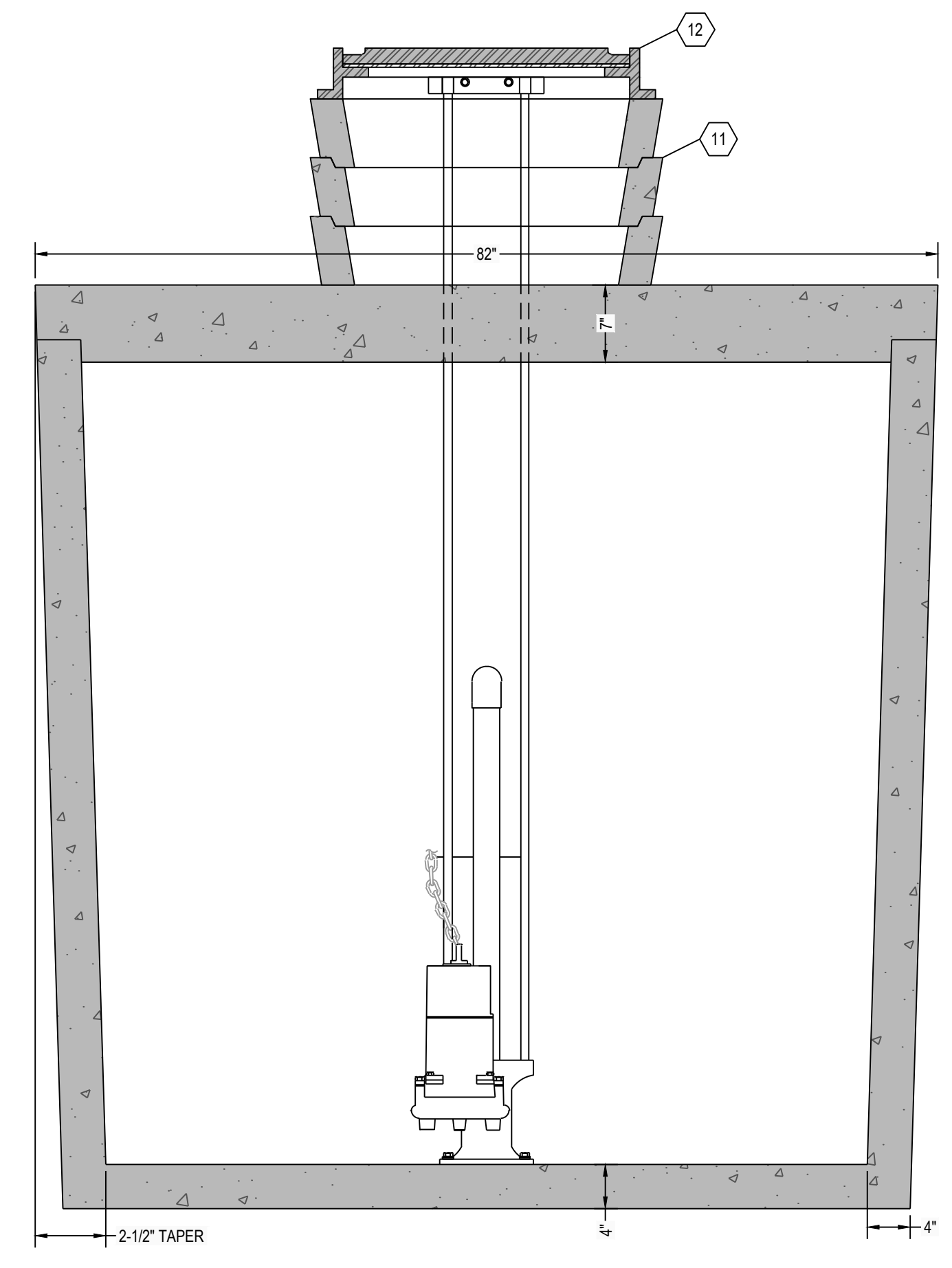
C

B

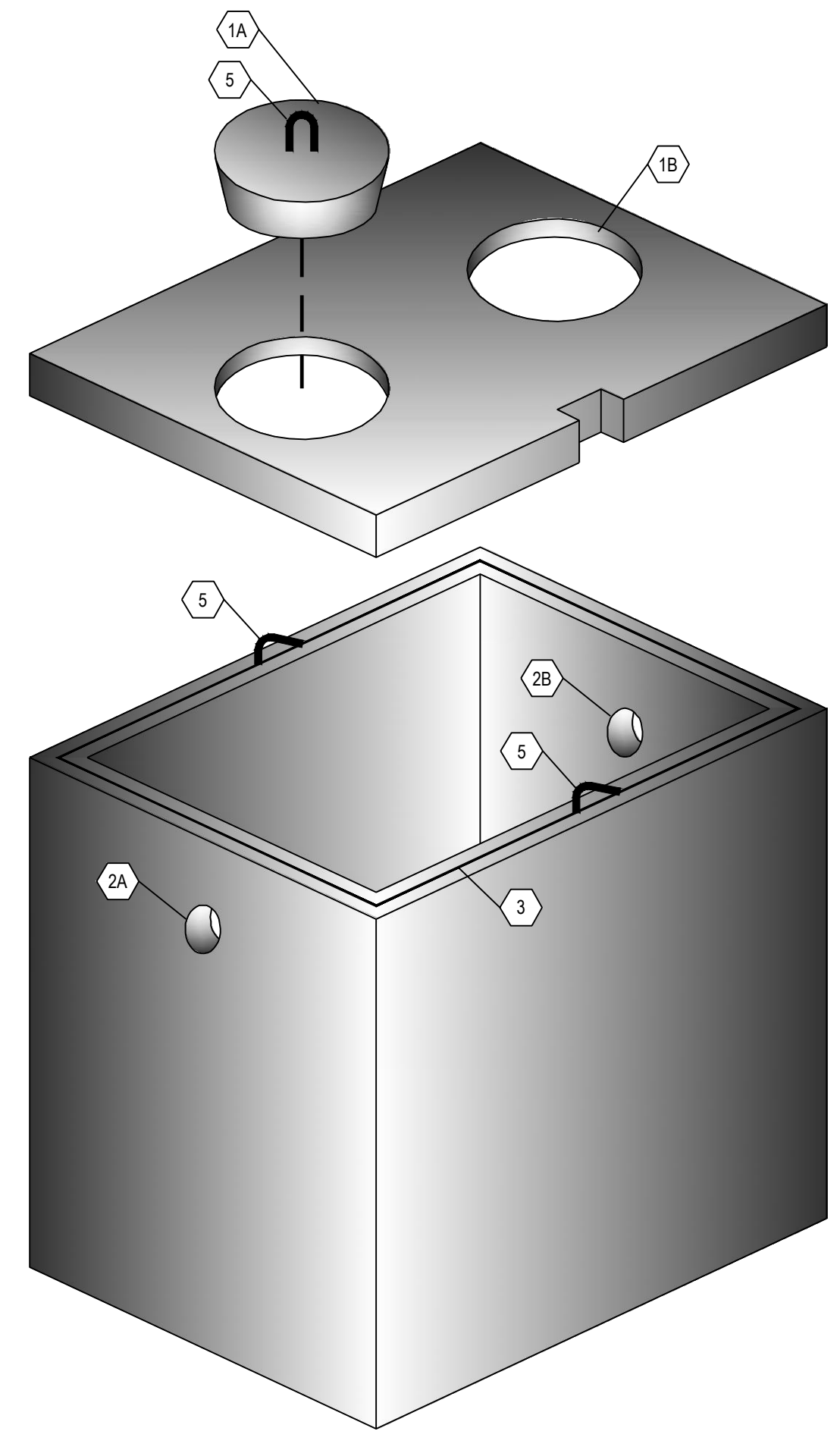
A



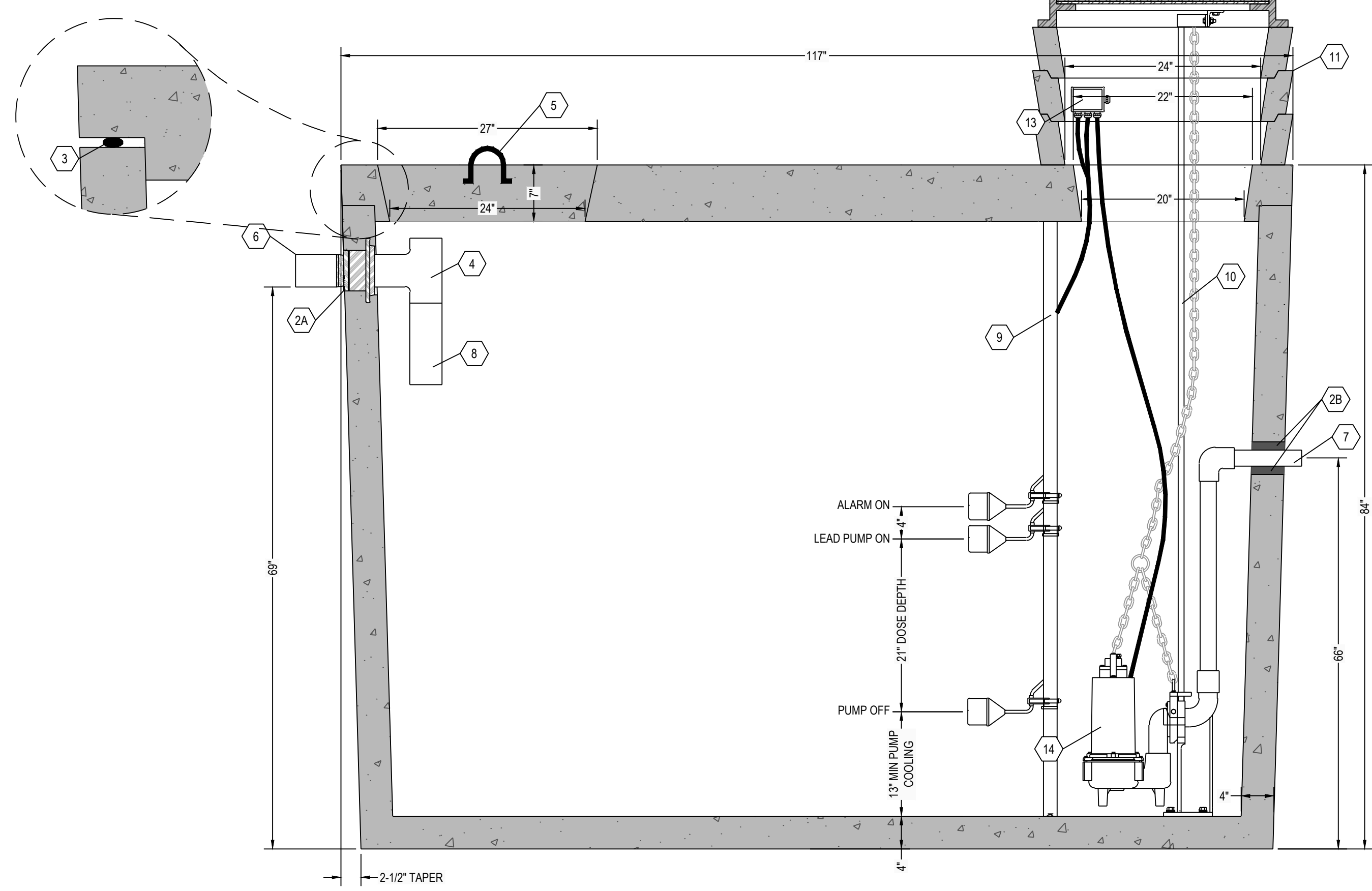
**C6 SEPTIC TANK TOP VIEW**  
1" = 1"



**C4 SEPTIC TANK SECTION VIEW**  
1" = 1"



**A6 THREE DIMENSIONAL ISOMETRIC VIEW**  
NTS



**A5 SEPTIC TANK SECTION VIEW**  
1" = 1"

**NOTE:**  
24" DIAMETER POLY RISERS & LIDS OR CUSTOM RECTANGULAR RISERS WITH ALUMINUM HATCHES ARE AVAILABLE AS SUBSTITUTES TO CONCRETE GRADE RINGS AS SHOWN HEREON.

**DOSING CHAMBER ELEVATIONS**

DESCRIPTION	ELEVATION (FEET)
BOTTOM OF CHAMBER	0.00
PUMP OFF	1.08
PUMP ON	2.83
ALARM	3.17
LAG PUMP ON	N/A

**KEYNOTE INDEX**

1A	24" DIAMETER MANWAY
1B	20" DIAMETER MANHOLE OPENING
2A	HIGH PRESSURE CLOSED END BOOT SEAL
2B	TS-4PRO RUBBER GASKET SEAL BY TUF-TITE
3	MASTIC ROPE
4	SANITARY TEE AT INLET
5	3" DIAMETER LIFTING HOOKS
6	6" DIAMETER INLET
7	12" DIAMETER OUTLET
8	12" EXTENSION AT INLET
9	FLOAT POLE ASSEMBLY WITH STAINLESS STEEL HARDWARE
10	RAIL SYSTEM WITH STAINLESS STEEL RAILS & HARDWARE
11	CONCRETE GRADE RING (AS NECESSARY)
12	CAST FRAME & COVER (NOT INCLUDED)
13	WATERTIGHT ELECTRICAL JUNCTION BOX
14	DOSING PUMP

**DESIGN DATA:**

- EARTH COVER = 5 FEET MAX
- ALLOWABLE WHEEL LOAD = 8000 LB MAX
- CONCRETE MINIMUM COMPRESSIVE STRENGTH = 5,000 PSI @ 28 DAYS
- LIFTING HOOKS ARE 3" DIAMETER, ASTM A36 COLD ROLLED STEEL
- SEPTIC TANK LID IS REINFORCED WITH #3 REBAR SPACED AT 12" OC GRID
- SEPTIC TANK BOTTOM AND SIDES ARE REINFORCED WITH 6 X 6 W8.0 X W8.0 WELDED WIRE FABRIC
- ALL CONCRETE SURFACES ABOVE THE LIQUID LEVEL ARE COATED WITH AIRLESS ASPHALT.

**CASTING WEIGHTS**

WEIGHT OF LID: 5,697 LBS  
 WEIGHT OF TANK: 12,494 LBS  
 TOTAL CASTING WEIGHT: 18,191 LBS

**DOSING TANK CAPACITY:**

LIQUID STORAGE = 2036 GALLONS  
 TOTAL VOLUME = 2584 GALLONS

32.8 GALLONS PER INCH  
 MAXIMUM DOSE = XXX GALLONS (XX)  
 PUMP COOLING = 426 GALLONS (13")  
 UNUSED (ALARM) = 131 GALLONS (4")  
 TOTAL = XXX GALLONS (XX)

**NOTES:**

- SET PUMP ON FLOAT SWITCH ELEVATION ACCORDING TO ELEVATION TABLE (BELOW) WHICH YIELDS THE REQUIRED DOSE VOLUME OF XXX GALLONS.
- CONTRACTOR SHALL INSTALL CONTROL PANEL ACCORDING TO PUMP MANUFACTURER'S RECOMMENDATION.
- COORDINATE POWER & ALARM SERVICE PRIOR TO CONSTRUCTION ACTIVITIES
- ONLY NON-CORROSIVE MATERIALS SHALL BE UTILIZED WITHIN THE DOSING TANK AND FOR THE RISER AND LID (NO GALVANIZED, PAINTED, OR EXPOSED STEEL)
- AUDIO VISUAL ALARM CIRCUIT MUST LOCK ON WITH ANY PUMP FAILURE WITH MANUAL RESET.

# RENSELAER SEPTIC TANKS

1211 NORTH WESTON STREET  
 P.O. BOX 70  
 RENSELAER, INDIANA 47978  
 phone: (219) 866-5063  
 (800) 240-5123  
 fax: (219) 866-3894

PROJECT NAME  
 CLIENT NAME  
 ADDRESS

PROJECT NO:  
 FILE: 2000 GAL-SINGLE-TR-SIMPLEX.DWG  
 DRAWN BY: ASJM  
 CHECKED BY: PEW

TITLE:  
**MANUFACTURER'S  
 DETAIL DRAWING**  
 2000 GALLON SIMPLEX CHAMBER  
 TRAFFIC RATED

**R-000**

\* ALL RENSELAER SEPTIC TANKS ARE MONOLITHICALLY Poured \*

This drawing is the property of Rensselaer Septic Tanks. It is submitted for reference purposes only. © 2008 Rensselaer Septic Tanks