

6

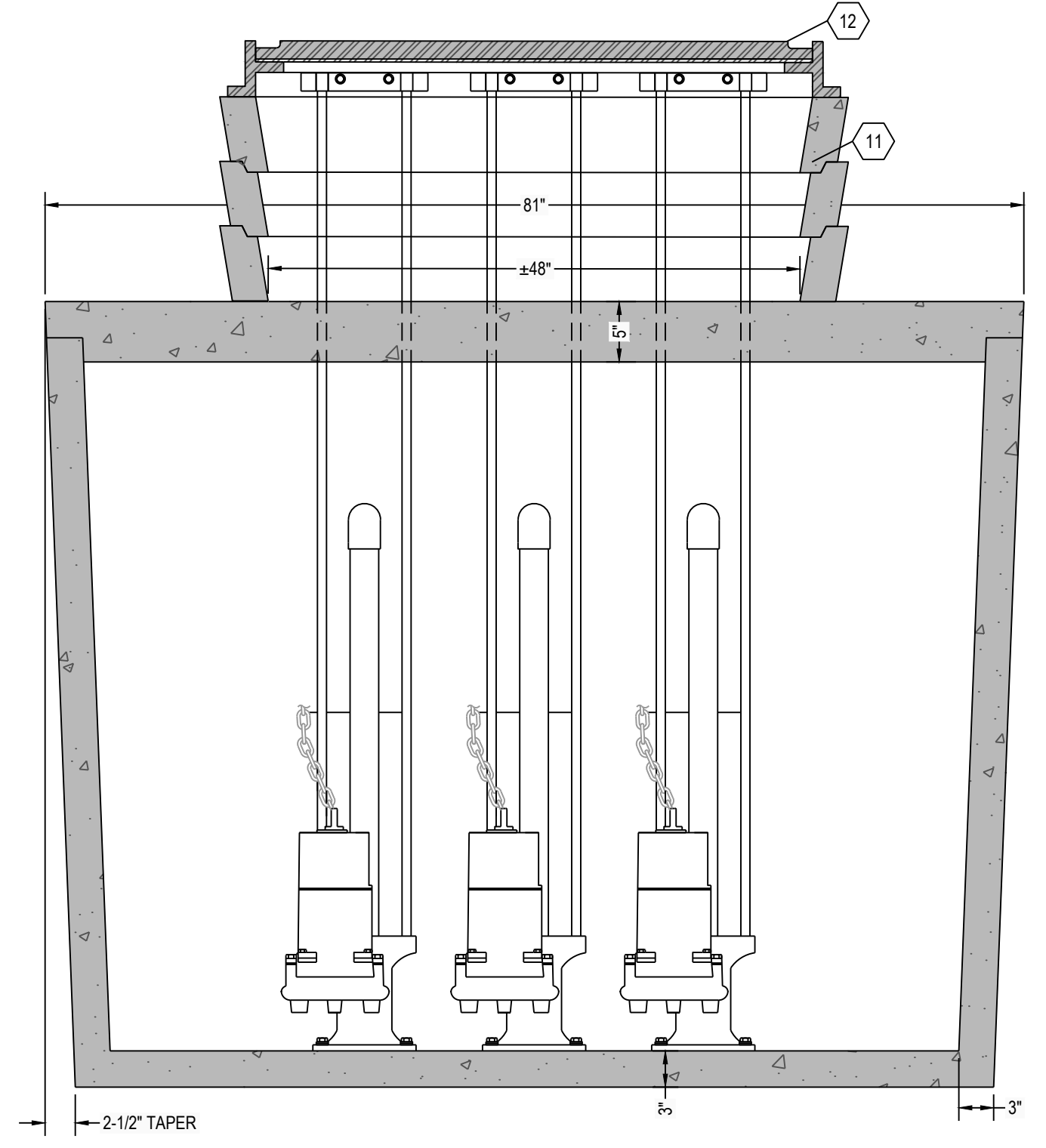
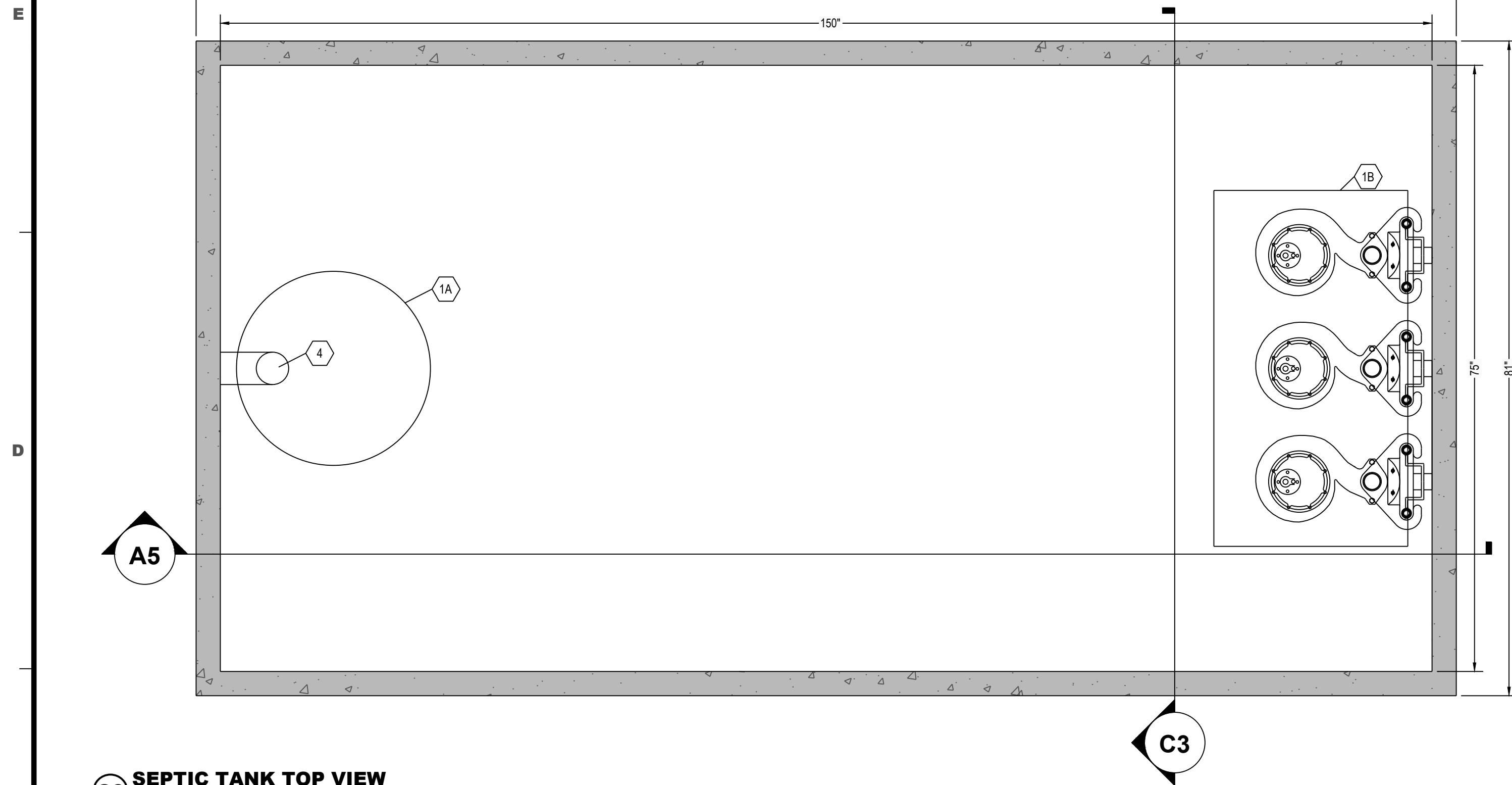
5

4

3

2

1



- DESIGN DATA:**
- EARTH COVER = 3 FEET MAX
 - ALLOWABLE WHEEL LOAD = 2500 LB MAX
 - CONCRETE MINIMUM COMPRESSIVE STRENGTH = 5,090 PSI @ 28 DAYS
 - LIFTING HOOKS ARE 1" DIAMETER, ASTM A36 COLD ROLLED STEEL
 - SEPTIC TANK LID IS REINFORCED WITH 6 X 6 W8.0 X W8.0 WELDED WIRE FABRIC
 - SEPTIC TANK BOTTOM AND SIDES ARE REINFORCED WITH 6 X 6 W10.0 X W10.0 WELDED WIRE FABRIC
 - ALL CONCRETE SURFACES ARE COATED WITH AIRLESS ASPHALT

CASTING WEIGHTS

WEIGHT OF LID: 5,484.4 LBS
 WEIGHT OF TANK: 9,697.9 LBS
 TOTAL CASTING WEIGHT: 15,182.3 LBS

DOSING TANK CAPACITY:

45.7 GALLONS PER INCH
 MAXIMUM DOSE = XXX GALLONS (XX)
 PUMP COOLING = 594 GALLONS (13")
 UNUSED (LAG AND ALARM) = 166 GALLONS (6")
 TOTAL = XXX GALLONS (XX)

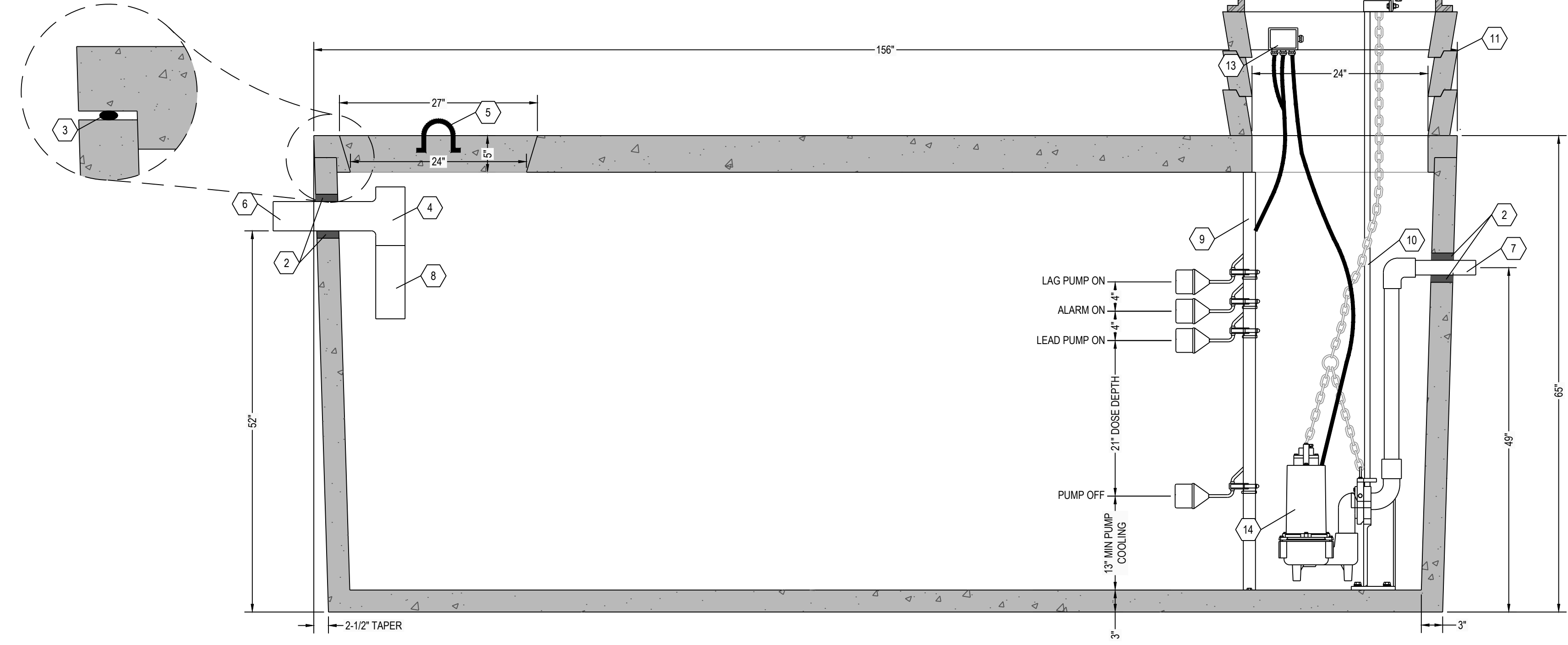
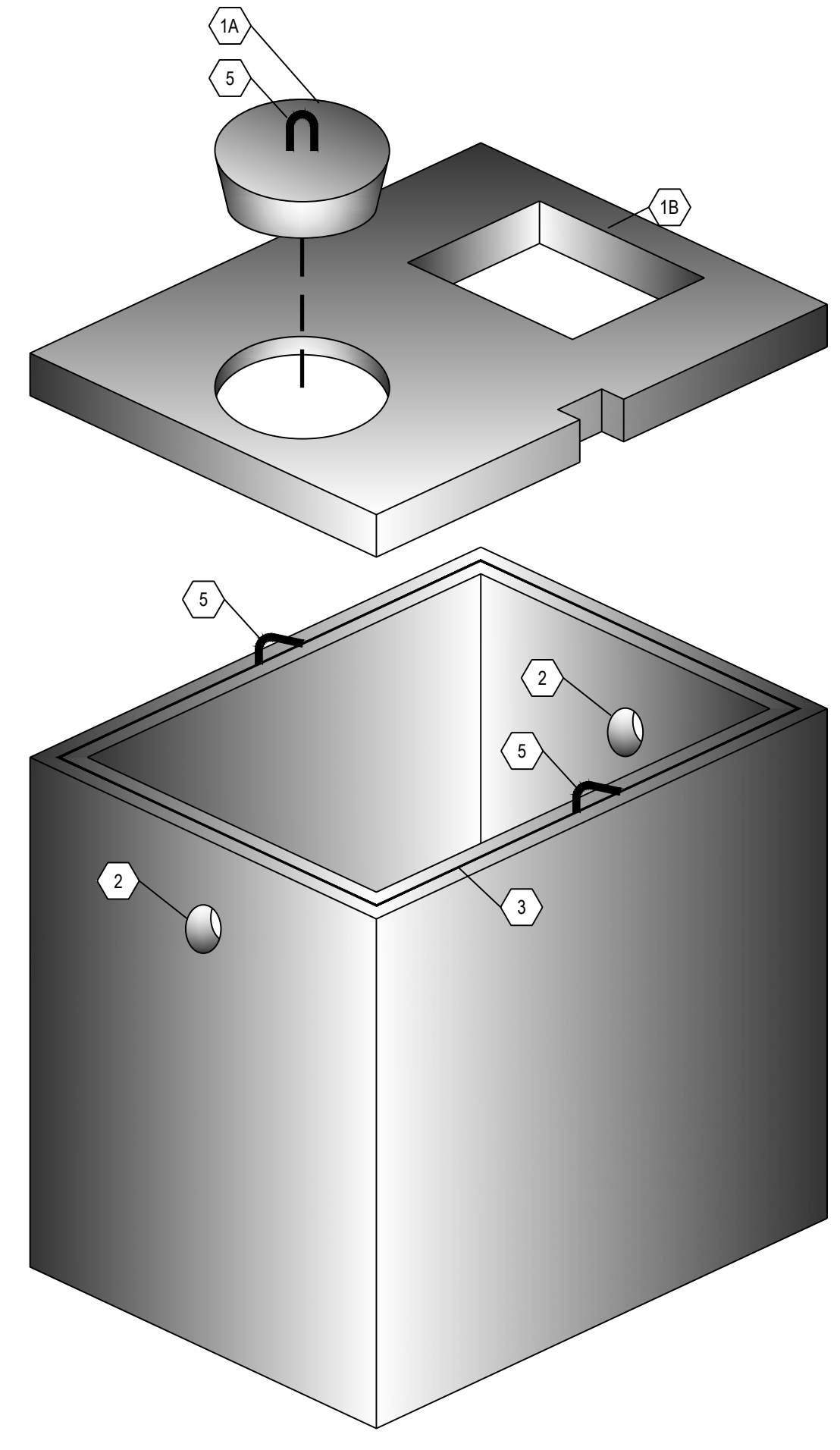
- NOTES:**
- SET PUMP ON FLOAT SWITCH ELEVATION ACCORDING TO ELEVATION TABLE (BELOW), WHICH YIELDS THE REQUIRED DOSE VOLUME OF XXX GALLONS.
 - CONTRACTOR SHALL INSTALL CONTROL PANEL ACCORDING TO PUMP MANUFACTURER'S RECOMMENDATION.
 - COORDINATE POWER & ALARM SERVICE PRIOR TO CONSTRUCTION ACTIVITIES
 - ONLY NON-CORROSIVE MATERIALS SHALL BE UTILIZED WITHIN THE DOSING TANK AND FOR THE RISER AND LID (NO GALVANIZED, PAINTED, OR EXPOSED STEEL)
 - AUDIO VISUAL ALARM CIRCUIT MUST LOCK ON WITH ANY PUMP FAILURE WITH MANUAL RESET.

C6 SEPTIC TANK TOP VIEW
1" = 1"

C3 SEPTIC TANK SECTION VIEW
1" = 1"

DOSING CHAMBER ELEVATIONS

DESCRIPTION	ELEVATION (FEET)
BOTTOM OF CHAMBER	0.00
PUMP OFF	1.08
PUMP ON	2.83
ALARM	3.17
LAG PUMP ON	3.50



- NOTE:**
- 24" DIAMETER POLY RISERS & LIDS OR 24" DIAMETER CONCRETE GRADE RINGS OR LARGER CUSTOM RECTANGULAR RISERS WITH ALUMINUM HATCHES ARE AVAILABLE AS SUBSTITUTES TO CONCRETE GRADE RINGS AS SHOWN HEREON.
 - HIGH PRESSURE CLOSED END BOOT SEALS ARE AVAILABLE AS SUBSTITUTES TO RUBBER GASKET TYPE SEALS AS SHOWN HEREON.

KEYNOTE INDEX

1A	24" DIAMETER MANWAY
1B	24" X ±48" MANHOLE OPENING
2	HIGH PRESSURE CLOSED END BOOT SEAL
3	MASTIC ROPE
4	SANITARY TEE AT INLET
5	1" DIAMETER LIFTING HOOKS
6	4" DIAMETER INLET (6" AVAILABLE UPON REQUEST)
7	X" DIAMETER OUTLET
8	12" EXTENSION AT INLET
9	FLOAT POLE ASSEMBLY WITH STAINLESS STEEL HARDWARE
10	RAIL SYSTEM WITH STAINLESS STEEL RAILS & HARDWARE
11	CONCRETE GRADE RING (AS NECESSARY)
12	LOCKABLE ALUMINUM HATCH & FRAME
13	WATERTIGHT ELECTRICAL JUNCTION BOX
14	DOSING PUMP

A6 THREE DIMENSIONAL ISOMETRIC VIEW
NTS

A5 SEPTIC TANK SECTION VIEW
1" = 1"

*** ALL RENSSELAER SEPTIC TANKS ARE MONOLITHICALLY Poured ***

RENSSELAER SEPTIC TANKS

1211 NORTH WESTON STREET
 P.O. BOX 70
 RENSSELAER, INDIANA 47978
 phone: (219) 866-5063
 (800) 240-5123
 fax: (219) 866-3894

PROJECT NAME
 CLIENT NAME
 ADDRESS

PROJECT NO:
 FILE: 2000 GAL- SINGLE- NT- TRIPLEX.DWG
 DRAWN BY: ASJM
 CHECKED BY: PEW

TITLE:
**MANUFACTURER'S
 DETAIL DRAWING**
 2000 GALLON TRIPLEX CHAMBER
 NO TRAFFIC

R-000

This drawing is the property of Rensselaer Septic Tanks. It is submitted for reference purposes only. © 2008 Rensselaer Septic Tanks