

6

5

4

3

2

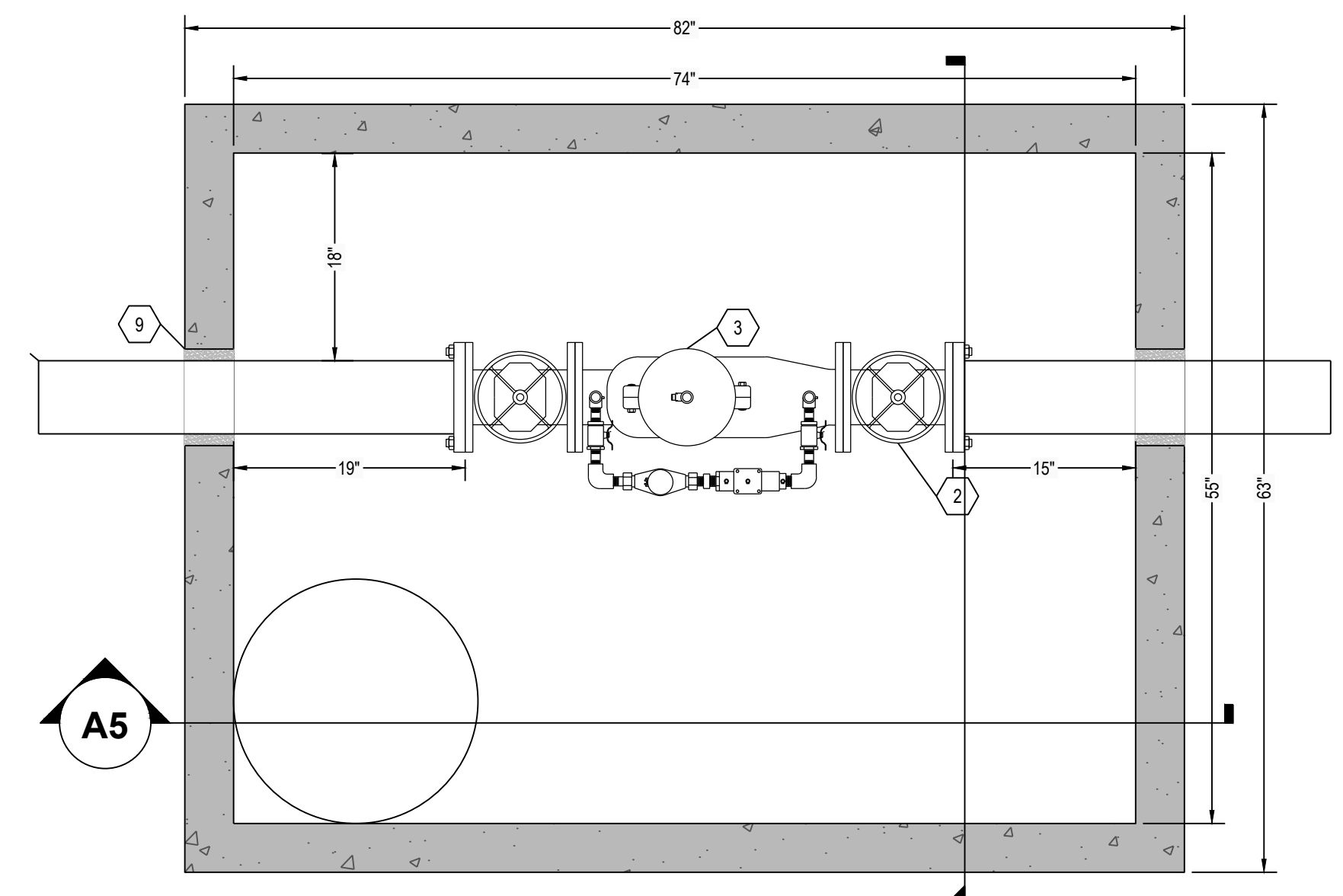
1

DESIGN DATA:

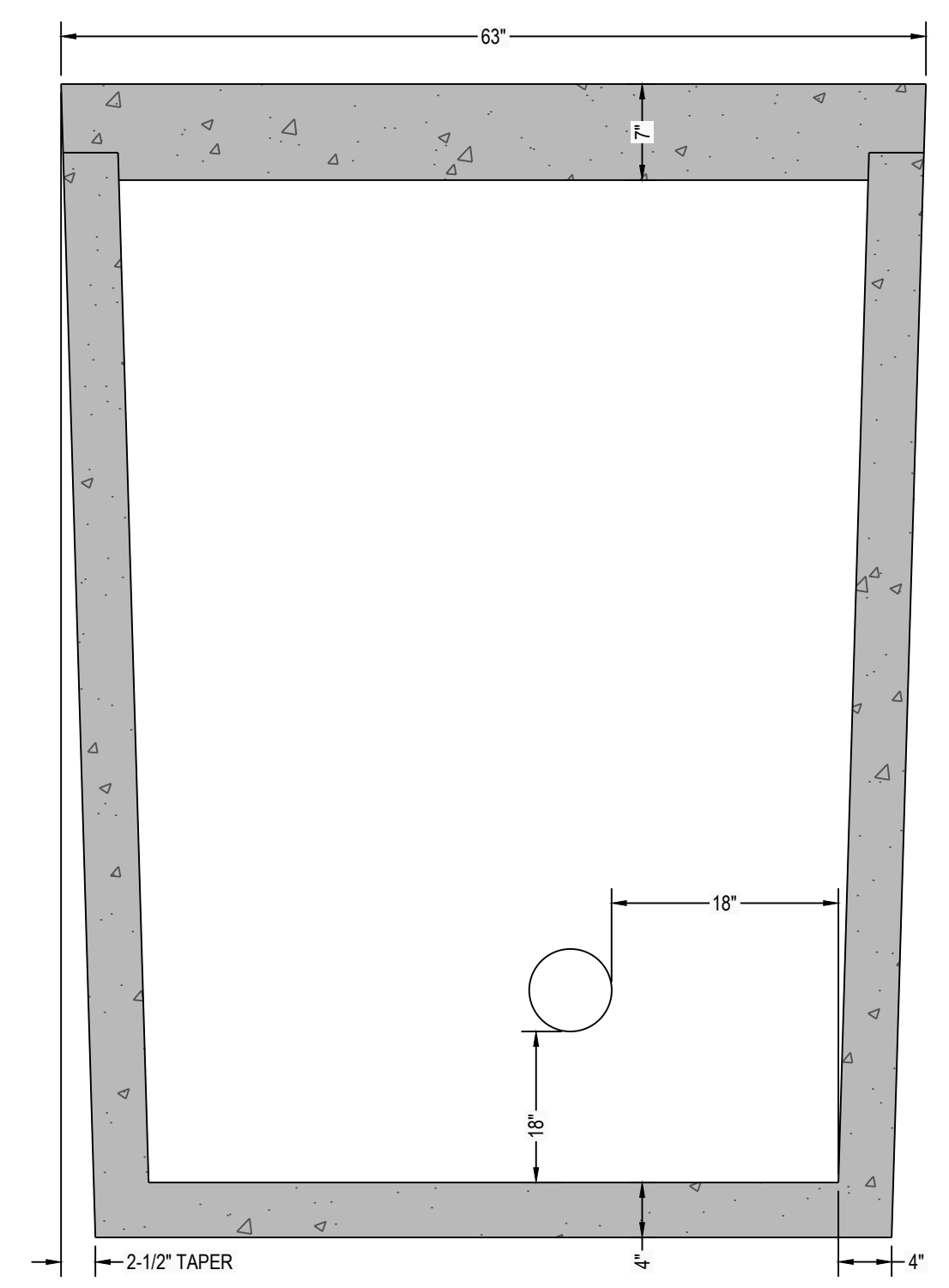
- EARTH COVER = 5 FEET MAX
- ALLOWABLE WHEEL LOAD = 8000 LB MAX
- CONCRETE MINIMUM COMPRESSIVE STRENGTH = 5,000 PSI @ 28 DAYS
- LIFTING HOOKS ARE 1/2" DIAMETER, ASTM A36 COLD ROLLED STEEL
- SEPTIC TANK LID IS REINFORCED WITH #3 REBAR SPACED AT 12" OC GRID.
- SEPTIC TANK BOTTOM AND SIDES ARE REINFORCED WITH 6 X 6 W8.0 X W8.0 WELDED WIRE FABRIC.
- ALL CONCRETE SURFACES ABOVE THE LIQUID LEVEL ARE COATED WITH AIRLESS ASPHALT.

CASTING WEIGHTS

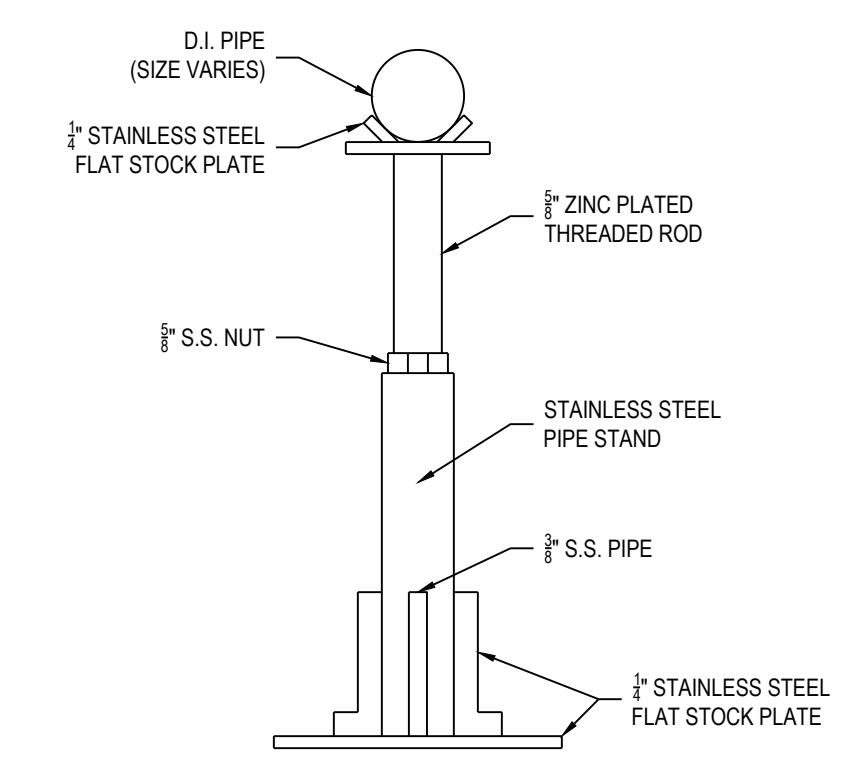
WEIGHT OF LID: 3,043.9 LBS
 WEIGHT OF TANK: 8,493.5 LBS
 TOTAL CASTING WEIGHT: 11,537.4 LBS



C6 SEPTIC TANK TOP VIEW 1"=1'



C3 SEPTIC TANK TOP VIEW 1"=1'



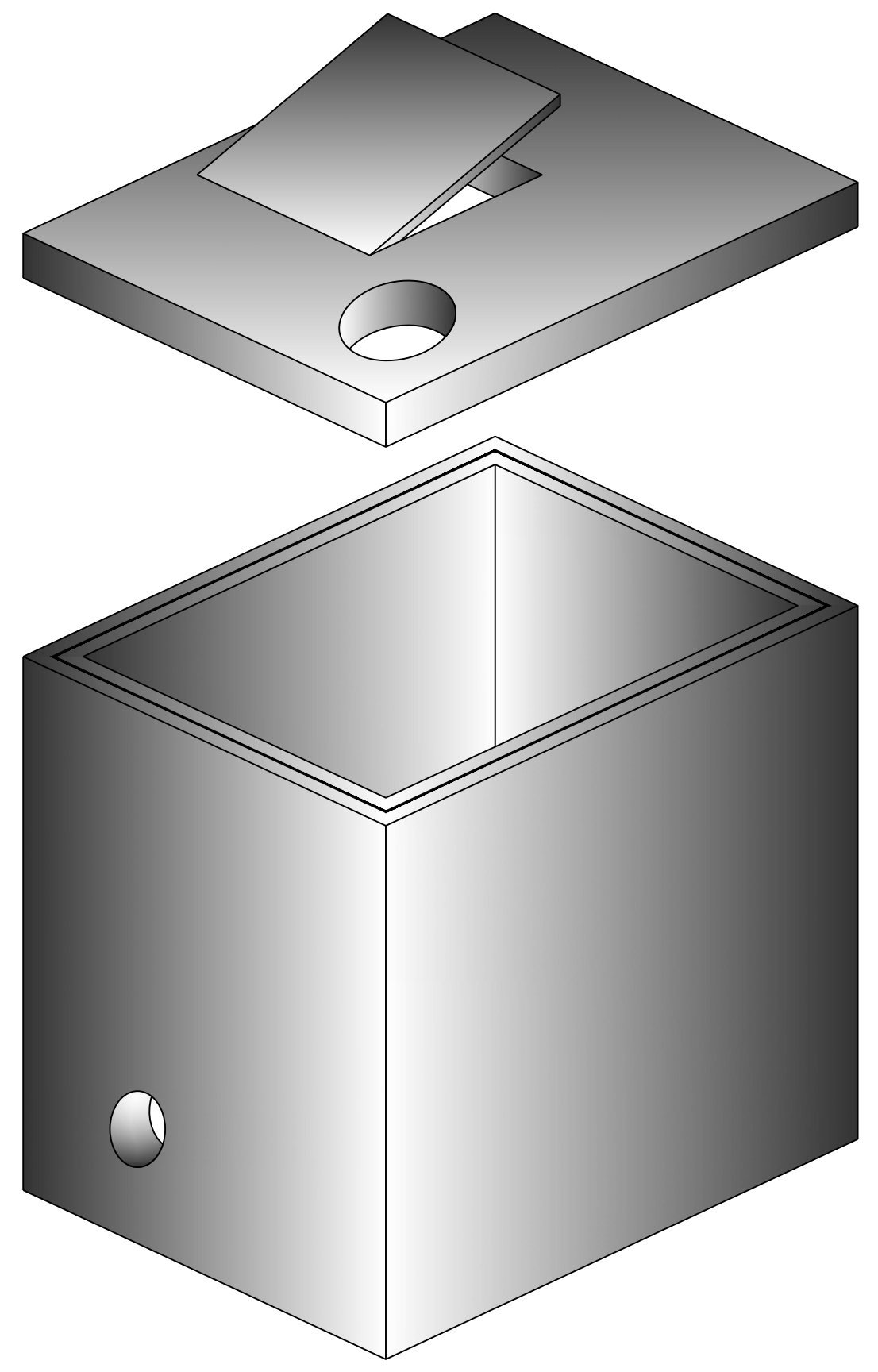
H2O LOAD BEARING VAULTS ARE ALSO AVAILABLE INCLUDING LARGER HATCHES, GRADE RINGS, AND OTHER CUSTOM MODIFICATIONS THAT CAN BE MADE TO MEET JOB REQUIREMENTS, FOR ADDITIONAL CHARGES.

VAULTS CAN BE ORDERED: ASSEMBLED, UNASSEMBLED, OR WITH NO CONTENTS.

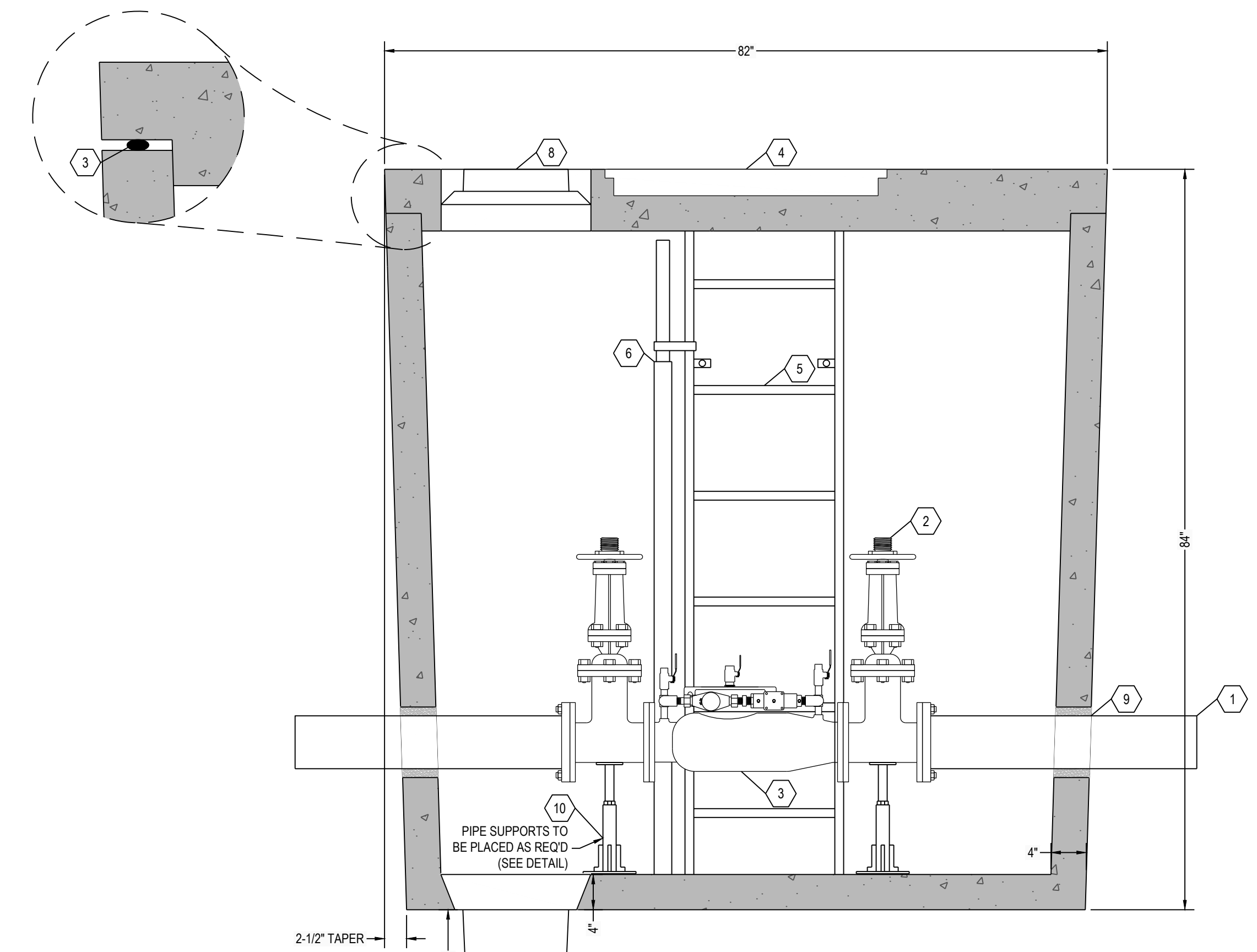
RENSELAER SEPTIC TANKS

1211 NORTH WESTON STREET
 P.O. BOX 70
 RENNELAER, INDIANA 47978
 phone: (219) 866-5063
 (800) 240-5123
 fax: (219) 866-3894

PROJECT NAME
 CLIENT NAME
 ADDRESS



A6 THREE DIMENSIONAL ISOMETRIC VIEW



A5 SEPTIC TANK SECTION VIEW 1"=1'

ITEM	QTY	ITEM DESCRIPTION
1	2	6" X VARIES D.I. PIPE
2	2	6" DIA. OS&Y VALVE
3	1	6" DOUBLE CHK. ASSEMBLY, DETECTOR-AMES 3000SS
4	1	30" SQUARE ALUMINUM HATCH- SEE NOTES
5	1	6'-1" ALUMINUM LADDER- SEE NOTES
6	1	ALUMINUM USE TYPE LADDERUP SAFETY DEVICE
7	1	SUMP PIT (20" DIAMETER) WITH GRATE
8	1	SUMP PUMP LID. SEE NOTE BELOW
9	4	HIGH PRESSURE OPEN END BOOT SEAL (TYP)
10	2	STAINLESS STEEL PIPE SUPPORT

NOTES
 HATCH TO BE 30" X 30" ALUMINUM HATCH, 300 PSF, SINGLE DOOR, INCLUDING ANGLE FRAME, STAINLESS STEEL NUTS & BOLTS, STAINLESS STEEL HINGES, STAINLESS STEEL AUTOMATIC HOLD-OPEN ARM WITH RED VINYL GRIP, FLUSH LIFT HANDLE, TAMPER PROOF FASTENERS, AND EXPOSED PADLOCK STAPLE.
 LADDER TO BE O.S.H.A. COMPLIANT ALUMINUM FLOORWALL MOUNT LADDER FABRICATED FROM 3/8" X 2 1/2" FLAT BARS AND 1 1/2" SQUARE EXTRUDED RUNGS, WITH SLIP RESISTANT RUNGS 12" ON CENTER, 18" WIDE WITH STANDARD MINIMUM 7" OFFSET MOUNTED WITH STAINLESS STEEL ANCHORS AND BOLTS.
 SUMP PUMP LIDS SHALL BE FORD A53-TT OR A53-T. THE A53-TT WILL BE USED FOR ALL VAULTS WITH THE DOMESTIC WATER INSIDE. THE A53-T WILL BE USED FOR ALL VAULTS WITH THE DCCDA ONLY LOCATED INSIDE THE VAULT.

* ALL RENNELAER SEPTIC TANKS ARE MONOLITHICALLY POURED *

PROJECT NO: ---
 FILE: IAW 1000 GAL- VAULT- TR.DWG
 DRAWN BY: ASJM
 CHECKED BY: PEW
 TITLE: **MANUFACTURER'S DETAIL DRAWING**
 1000 GALLON WATER METER VAULT
 TRAFFIC RATED

R-000

This drawing is the property of Rensselaer Septic Tanks. It is submitted for reference purposes only. © 2008 Rensselaer Septic Tanks