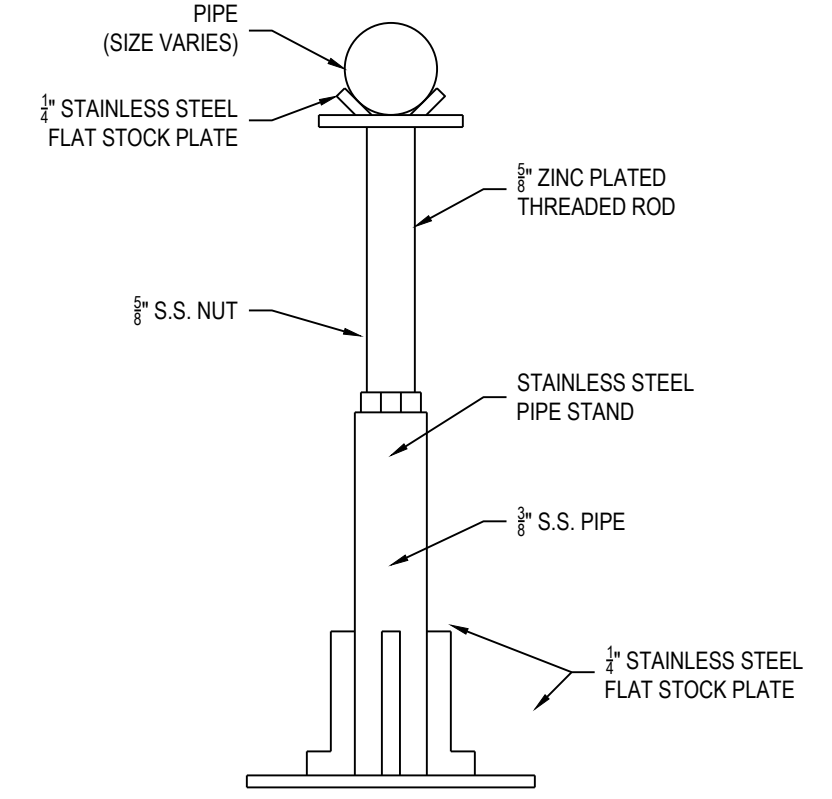
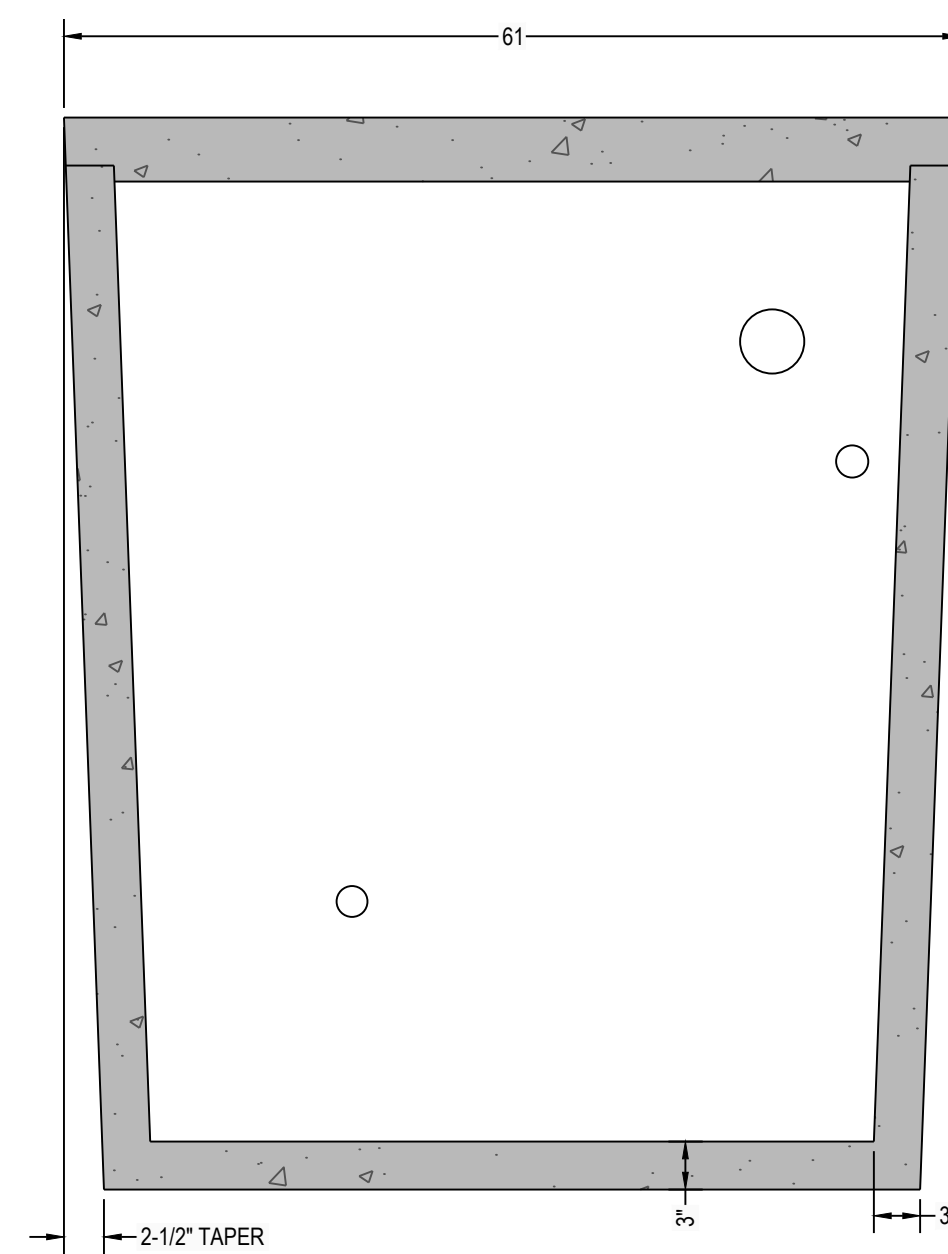
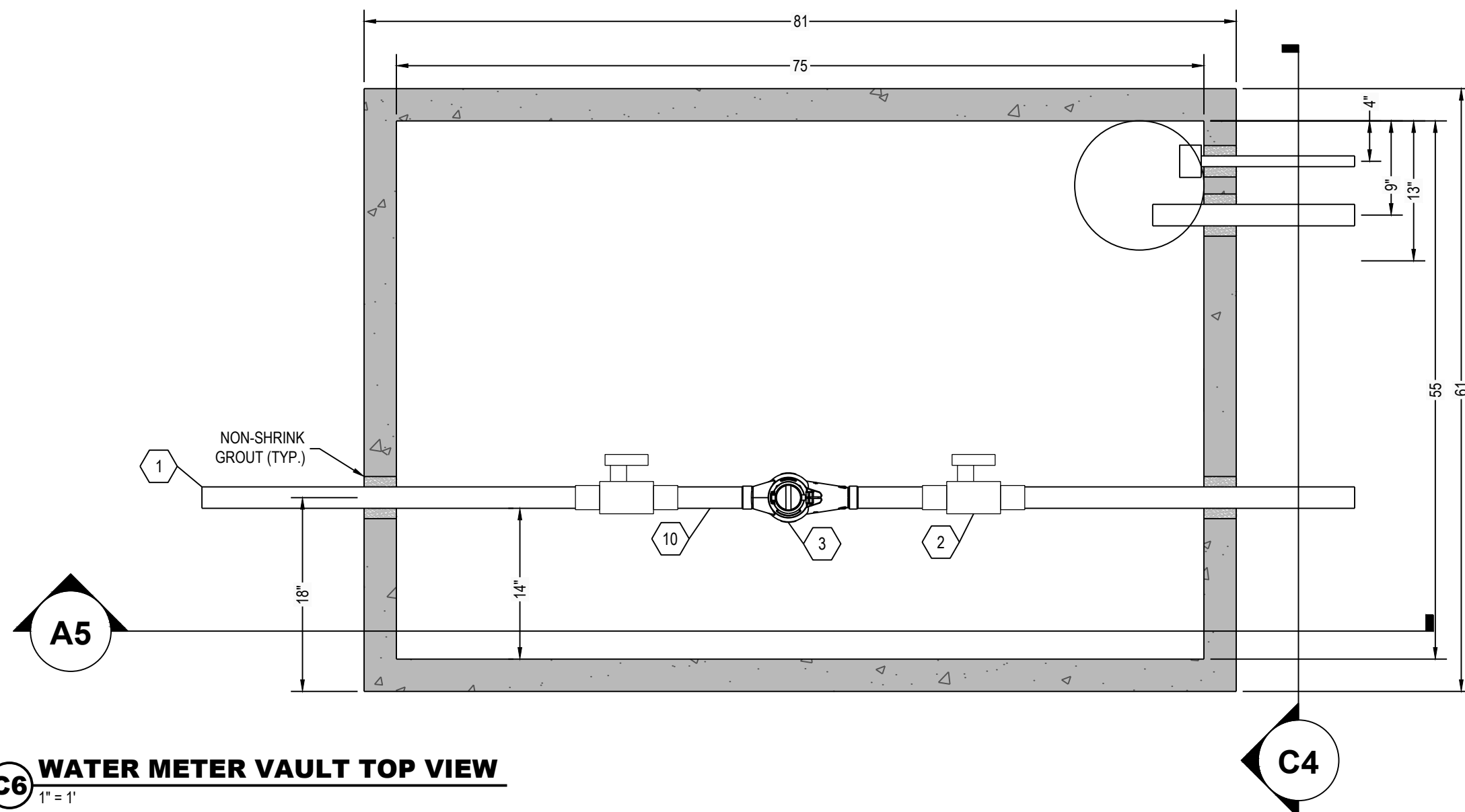


DESIGN DATA:

1. EARTH COVER = 3 FEET MAX
2. ALLOWABLE WHEEL LOAD = 2500 LB MAX
3. CONCRETE MINIMUM COMPRESSIVE STRENGTH = 5,000 PSI @ 28 DAYS
4. VAULT LID IS REINFORCED WITH 6 X 6 W8.0 X W8.0 WELDED WIRE FABRIC.
5. VAULT BOTTOM AND SIDES ARE REINFORCED WITH 6 X 6 W10.0 X W10.0 WELDED WIRE FABRIC.

CASTING WEIGHTS

WEIGHT OF LID: 2,149.4 LBS
 WEIGHT OF TANK: 3,134.6 LBS
 TOTAL CASTING WEIGHT: 5,284.0 LBS



D1 PIPE SUPPORT DETAIL

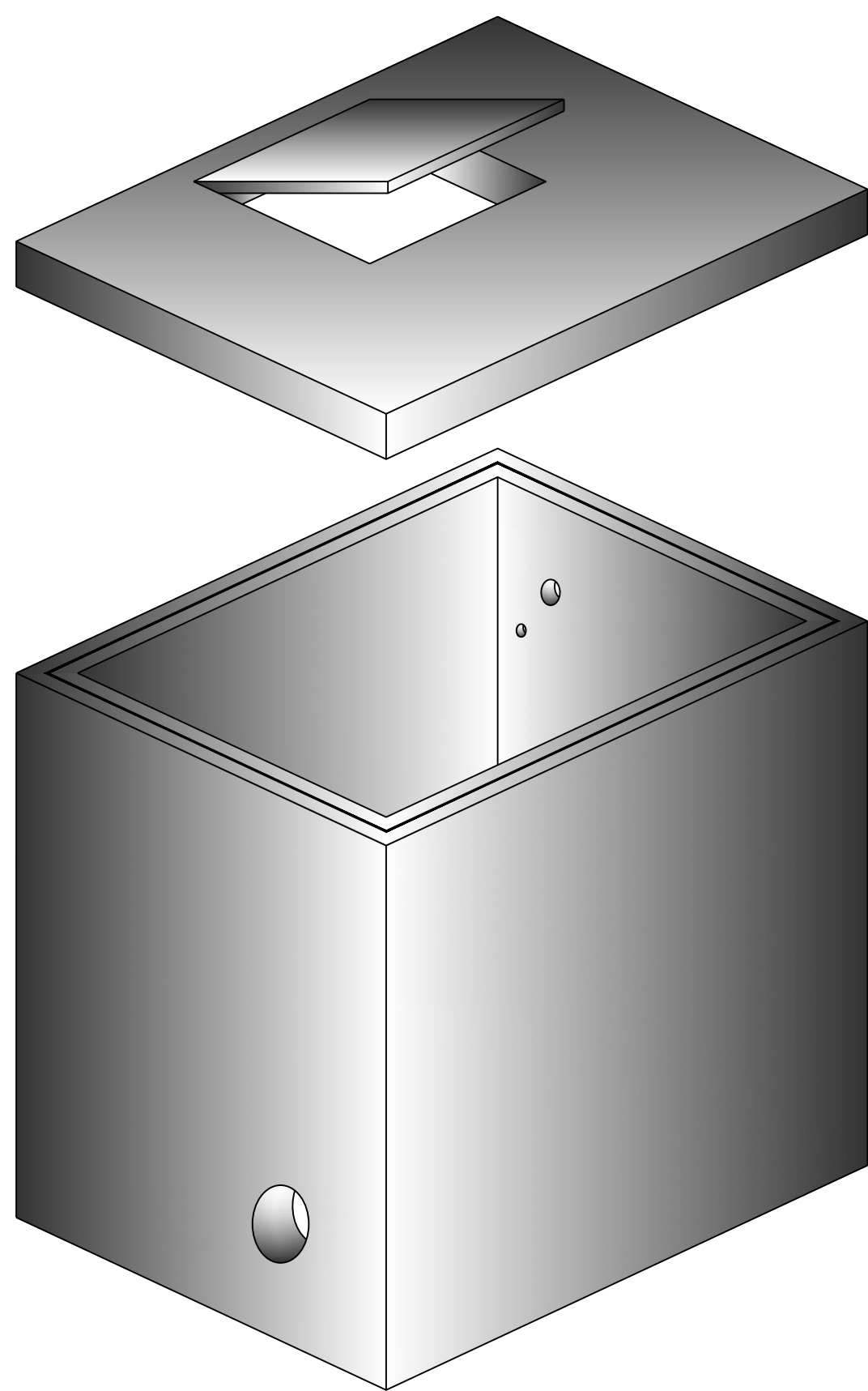
H2O LOAD BEARING VAULTS ARE ALSO AVAILABLE INCLUDING LARGER HATCHES, GRADE RINGS, AND OTHER CUSTOM MODIFICATIONS THAT CAN BE MADE TO MEET JOB REQUIREMENTS, FOR ADDITIONAL CHARGES.

VAULTS CAN BE ORDERED: ASSEMBLED, UNASSEMBLED, OR WITH NO CONTENTS.

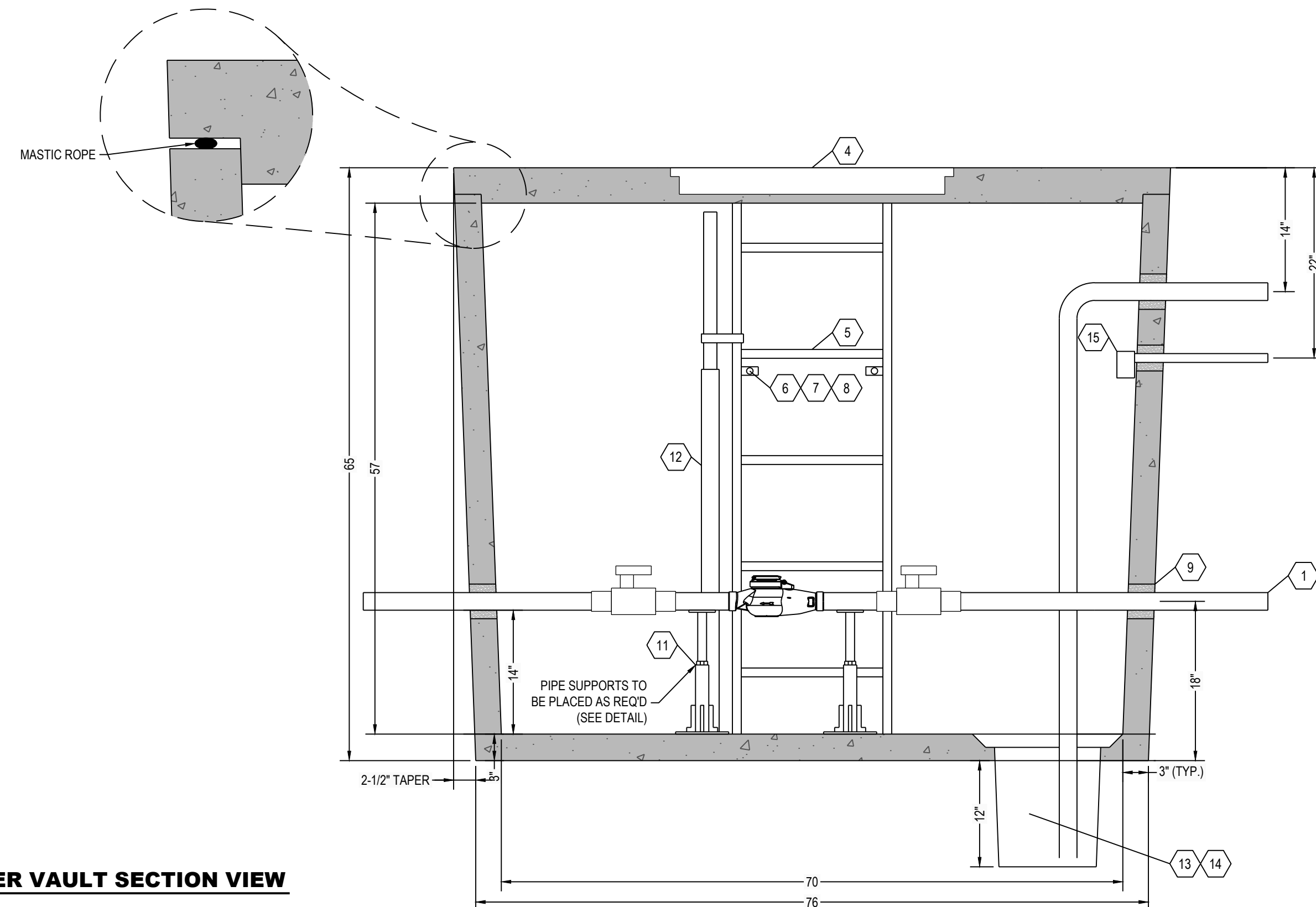
RENSELAER SEPTIC TANKS

1211 NORTH WESTON STREET
 P.O. BOX 70
 RENNELAER, INDIANA 47978
 phone: (219) 866-5063
 (800) 240-5123
 fax: (219) 866-3894

PROJECT NAME
 CLIENT NAME
 ADDRESS



A6 THREE DIMENSIONAL ISOMETRIC VIEW



A5 WATER METER VAULT SECTION VIEW

ITEM	QTY	ITEM DESCRIPTION
1	2	2" DIA. WATER PIPE
2	2	2" DIA. VALVE
3	1	2" DOMESTIC SERVICE METER (INSTALLED BY UTIL.)
4	1	30" SQUARE ALUMINUM HATCH- SEE NOTES
5	1	5'-0" ALUMINUM LADDER- SEE NOTES
6	6	3/8" STAINLESS ANCHOR BOLT
7	7	3/8" STAINLESS WASHER
8	4	3/8" STAINLESS NUT
9	4	CORED HOLE, FILLED WITH GROUT
10	VAR	2" HARD COPPER PIPING- TYPE K
11	2	STAINLESS STEEL PIPE SUPPORT
12	1	ALUMINUM USF TYPE LADDERUP SAFETY DEVICE
13	1	SUMP PIT W/ GRATE, HDPE BY POLYLOK
14	1	SUMP PUMP ASSEMBLY W/ 1/3 HP, 115 VOLT, 1 PH ZOELLER M151 AUTOMATIC PUMP, BALL CHECK VALVE, BALL VALVE, UNION TYPE DISCONNECT
15	1	ELECTRICAL JUNCTION BOX

NOTES
 HATCH TO BE 30" X 30" ALUMINUM HATCH, 300 PSF. SINGLE DOOR, INCLUDING ANGLE FRAME, STAINLESS STEEL NUTS & BOLTS, STAINLESS STEEL HINGES, STAINLESS STEEL AUTOMATIC HOLD-OPEN ARM WITH RED VINYL GRIP, FLUSH LIFT HANDLE, TAMPER PROOF FASTENERS, AND EXPOSED PADLOCK STAPLE.
 LADDER TO BE O.S.H.A. COMPLIANT ALUMINUM FLOORWALL MOUNT LADDER FABRICATED FROM 3/8" X 2 1/2" FLAT BARS AND 1 1/2" SQUARE EXTRUDED RUNGS, WITH SLIP RESISTANT RUNGS 12" ON CENTER, 18" WIDE WITH STANDARD MINIMUM 7" OFFSET MOUNTED WITH STAINLESS STEEL ANCHORS AND BOLTS.

PROJECT NO: **08012**
 FILE: 750 NT WATER METER PIT.DWG
 DRAWN BY: TVL
 CHECKED BY: PEW
 TITLE:
MANUFACTURER'S DETAIL DRAWING
 750 GALLON WATER METER VAULT
 NO TRAFFIC

* ALL RENNELAER SEPTIC TANKS ARE MONOLITHICALLY POURED *

R-000